



2012 ARIZONA STATE VOLLEYBALL

Corinne Calabro, ASU Media Relations
O: 480-965-1237 | corinne.calabro@asu.edu

ASU hosts

No. 6 USC | Friday 6 p.m. PT | Pac-12 Network
No. 5 UCLA | Saturday 7 p.m.



15-10, 4-8 Pac-12



21-3, 9-3 Pac-12



17-4, 9-3 Pac-12

vs. No. 6 USC | Nov. 2, 6 p.m.
TV: Pac-12 Network
Radio: Blaze Radio online

vs. No. 5 UCLA | Nov. 3, 7 p.m.
Radio: Blaze Radio online
Twitter @SunDevilVB

About the So.Cal Schools

They enter their first road matches in over two weeks when they travel to Tempe/Tucson on Friday. In Pac-12 play this year, USC and UCLA are just 2-2 on the road - both lost matches at Stanford and Washington.

About the USC Series

The Trojans picked up the first win of this years series, 3-1 in LA. All-time USC leads the Sun Devils 11-1-59. The Trojans are on a current five-match win streak and have won eight of their last 10 matches.

About the UCLA Series

In the last meeting, ASU suffered a 3-0 sweep at then-ranked No. 6 UCLA. All-time ASU trails 8-65 to UCLA. The last time ASU beat the Bruins was Oct. 16, 2010 in Tempe. UCLA is on a current five-match win streak.

Freshman Records Fall

Macey Gardner has already tied the freshman record for most kills in a

match (28 at UC Irvine 8/31/12) and is 28 kills shy of tying Christine Garner's freshman season record of 475, recorded in 1992. Currently Gardner averages 4.71 k/s, and needs to finish above Garner's 4.17 k/s to rewrite that 1992 record as well.

Under Jason Watson, three freshman class records have been compiled thus far.

Single Season Updates

Following big outings on the road at Stanford and Cal, Macey Gardner and Stephanie Preach are on their way to tallying single-season records. Gardner is currently 12th in kills (447) and is just 12 shy of tying for 10th (459). Preach ranks 12th in digs (436) and needs just 28 to tie for 10th (464).

Career Leaders Update After Oct.

At the end of the month of October, ASU has three who rank all-time in career records at ASU. Preach in digs (7th, 1277) and Wilson in block assists

(5th, 286) and total blocks (8th, 313). See the complete rankings on pg. 4

Preach Ranks All-Time In Digs

Stephanie Preach notched her name in the ASU record books on Friday at Colorado. Her 23 digs against the Buffs lifted her career tally to 1200 and with an additional six, she ranks eighth all-time with 1206 digs. *Updates on pg. 4

Follette Hits A High Mark

Whitney Follette recorded her single-match high in kills at Colorado with 11. In the match she also improved her best marks in block assists, eight, and points, 15.

Double-Double Trouble

Macey Gardner leads the Pac-12 in most double-doubles on the year. Gardner tallied her eighth at No. 5 USC with 14 kills and 21 digs. Allison Palmer currently has six (last at USC, 44 assists, 11 digs) and Nora Tuioti-Mariner recorded her first this season also at USC (10 kills, 15 digs).

Career Leaders Update

Stephanie Preach is one dig away from breaking into the Top 10 all-time dig records at ASU, she currently has 1177. Erica Wilson sits at eighth all time in total blocks (305) and fifth in block assists (279). To see the next bench mark, reference page 4 of the game notes.

Double-Digit Kills

ASU had four post double-digit kills on Aug. 31 at UC Irvine, a team best this season. At USC, the Devils had three with double-digit kills, the most in a conference match this year.

Gardner Earns Second POW Award

Gardner picked up her second Pac-12 Freshman of the Week honor on Oct. 1 after posting 20 kills against Cal (.350), with 10 coming in the third frame. Against No. 7 Stanford, Gardner had 27 kills, one shy of her single match high, a tally that led both squads. Averaged 6.71 kills per set over the weekend.

Sun Devils Route Cal

ASU swept Cal, 3-0, on Sept. 28 to even the series 28-28 between the two teams. A season-best .440 attack percentage aided ASU's first win over Cal since 2010 and first sweep of the Golden Bears since Oct. 28, 2000.

When Up 2-0 Going Into The Break

The Sun Devils are 6-0 on the year when leading two sets to none heading into the break. In all six instances, ASU has come away with a 3-0 sweep. Most recent: Sept. 28 vs. Cal in Tempe.

Four Times For Follette

Freshman OH Whitney Follette tied her individual match kill high of eight for the third and fourth times against Cal (Sept. 28) and No. 7 Stanford (Sept. 30). Against Cal, Follette swung at a .727 clip. Defensively, she tallied her season best in blocks (5) over the weekend against both Cal and Stanford.

Gardner Named Pac-12 Frosh OTW

Macey Gardner of the Arizona State volleyball team was named the Pac-12 Volleyball Freshman of the Week for the week of Sept. 10-16. This is the 17th all-time weekly selection for the Sun Devils and just the second time ASU has had a Freshman of the Week, the last being Nora Tuioti-Mariner on Nov. 14, 2011.

Tournament Recaps:

ASU won three tournaments in the non-conference portion of the season: UTEP's El Paso Sports Commission Invitational, UCI/LMU Dual Classic and the ASU Sheraton Invitational.

Along with compiling an 11-2 record during non-conference play, the Sun Devils garnered individual awards as well.

UTEP All-Tournament: Macey Gardner, Stephanie Preach, MVP Erica Wilson
UCI/LMU All-Tournament: Macey Gardner, Stephanie Preach

Kansas All-Tournament: Macey Gardner, Erica Wilson

ASU All-Tournament: Alexis Pinson, Stephanie Preach, MVP Macey Gardner

Three Take Honors At Sheraton Invite

Macey Gardner was named the Most Valuable Player of the Sheraton Invitational, making it her fourth tournament honor of the year. Alexis Pinson and Stephanie Preach were also named to the All-Tournament Team to round out ASU's 4-0 weekend.

More All-Tournament Honors for the Devils

Macey Gardner and Erica Wilson picked up additional tournament accolades as the duo were named to the Jayhawk Invitational All-Tournament Team. The award is Gardner's third of the year and second for Wilson. After the weekend, Gardner leads the Pac-12 in kills (4.83 per set) and Wilson is tops in the conference in aces (0.50 per set).

Preach and Gardner UCI/LMU All-Tournament

Stephanie Preach and Macey Gardner were named to their second consecutive All-Tournament Team, this time to the UCI/LMU Dual Classic. Gardner led the squad with 68 kills for 5.67 per set. Preach had 64 digs over the weekend and is third in the Pac-12 with 4.92 digs on the season.

Can't Get Past Pinson

Alexis Pinson recorded a team-best 12 block assists at the UCI/LMU tournament, including 10 at LMU to help the Sun Devils rally back to win, 3-1. On the year she leads the club with 30 total blocks for 1.25 per set. As of 9/4 she ranks eighth in the Pac-12 for blocks.

Her 10 blocks at UCI is second in the conference for single-match high of blocks (behind Utah's Erin Redd's 13).

Gardner Ties Frosh Kill Record

Macey Gardner tied ASU's freshman single-match kill record, with 28 at UC Irvine, tying Sarah Reaves who posted the same in 2007. The 28 kills also ranks 17th all-time in single match records.

Wilson's Slammin' Season Start

Erica Wilson started her senior season with tournament MVP honors in El Paso. She earned the award after posting career-high marks in kills (24 against UTEP), beating her previous high of 15; points (26 against UTEP) her previous being 20; service aces (hit five against Fresno State and Idaho State).

Freshmen Get the Nod

Three freshmen got their first career starts in the season-opener against Idaho State on Aug. 24. Whitney Follette, Macey Gardner and Allison Palmer made the starting rotation and finished the match with 7 and 16 kills, respectively. Palmer (50 assists, 13 digs) and Gardner (16 kills, 11 digs) posted double-doubles, the first for ASU this season.

Three Earn All-Tournament Honors at UTEP

Macey Gardner and Stephanie Preach were named to the All-Tournament team and senior Erica Wilson garnered Tournament Most Valuable Player. Leaders over the weekend in kills were Erica Wilson (55) and Macey Gardner (44). Wilson posted an impressive 11 service aces during the tournament while Gardner posted a double-double against Idaho State in the season opener.

ASU Opens with Program-Best Start Since 2006

The Sun Devils posted a 3-0 record en route to winning the El Paso Sports Commission Invitational. The opening weekend marked a program-best start since 2006, when ASU went 4-0 under then head coach Brad Saindon. This is the best opening weekend for Watson.

50-Win Benchmark

Head coach Jason Watson earned his 50th win as a Sun Devil, on Aug. 25 in a 3-0 win against Fresno State. Watson started the season with 48 victories, tallying his 49th on opening day against

Idaho State (W, 3-2) and capped the weekend with 51 wins after topping UTEP 3-1. He joined the maroon and gold in 2008.

Who To Watch For

ASU returns five starters from the 2011 season in Erica Wilson (Sr., MB), Nora Tuioti-Mariner (So., OH), Shannan McCreedy (So., S), Alexis Pinson (Jr., MB) and Stephanie Preach at Libero (Jr.).

Look out for the freshman class to make an immediate break on the starting lineup. Mercedes Binns (MB) offers strength on the front line with her 6-2 frame. Both Whitney Follette (OH) and Macey Gardner (OH) bring junior national team experience that will help them vie for spots early on in the season.

Heading into the weekend the setter spot is a close race between McCreedy and freshman Allison Palmer.

New Face on the Bench

Jason Watson announced the addition of assistant coach Mike Wall over the summer. The name might ring a bell as Wall previously coached with the Sun Devils from 2006-2008. No stranger to Watson's leadership, Wall also played collegiately at BYU - winning two National Championships in 1999 and 2001.

Pac-12 Rankings

Kills Per Set

Gardner	1st	4.71
Wilson	5th	4.24

Assists Per Set

Palmer	2nd	11.43
--------	-----	-------

Servies Aces

Wilson	3rd	0.32
--------	-----	------

Digs Per Set

Preach	3rd	4.59
--------	-----	------

Pac-12 Only Rankings

Team digs per match

	4th	14.62
--	-----	-------

Kills Per Set

Gardner	3rd	4.58
Wilson	7th	4.22

Assists Per Set

Palmer	3rd	10.86
--------	-----	-------

Digs Per Set

Preach	7th	4.24
--------	-----	------

National Rankings

Kills Per Set

Gardner	5th	4.71
Wilson	32nd	4.24

Points Per Set

Gardner	15th	5.02
Wilson	27th	4.86

Assists Per Set

Palmer	16th	11.42
--------	------	-------

AVCA Top 25

Updated Oct. 29

1	Stanford
2	Oregon
3	Penn State
4	Nebraska
5	UCLA
6	USC
7	Texas
8	Washington
9	Hawai'i
10	Minnesota
11	Florida State
12	Louisville
13	Florida
14	Dayton
15	Ohio State
16	Kansas State
17	BYU
18	San Diego
19	Western Kentucky
20	Kansas
21	Iowa State
22	Purdue
23	Miami (FL)
24	Pepperdine
25	St. Mary's (CA)

Teams in bold are Pac-12

Pac-12 Standings | Updated 11/2/12

	Conference		Overall	
Stanford	12-0	1.000	20-2	.909
Oregon	11-1	.917	20-1	.952
USC	9-3	.750	21-3	.875
UCLA	9-3	.750	17-4	.810
Washington	8-4	.667	17-4	.810
California	5-7	.417	11-11	.500
Arizona State	4-8	.333	15-10	.600
Arizona	4-8	.333	12-11	.522
Colorado	4-9	.308	14-11	.560
Oregon State	3-9	.250	13-11	.542
Utah	3-9	.250	12-13	.480
Washington State	1-12	.077	11-14	.440



Double-Doubles

Gardner (9)

20 K, 11 digs	at #2 Stanford	10/26
14 K, 21 digs	at #5 USC	10/7
27 K, 13 digs	v #7 Stanford	9/30
24 K, 12 digs	v Gonzaga	9/15
13 K, 10 digs	v FAU	9/15
24 K, 18 digs	v Wyoming	9/7
28 K, 11 digs	at LMU	9/1
28 K, 15 digs	at UCI	8/31
16 K, 11 digs	v Idaho St	8/24

Palmer (8)

55 a, 14 digs	at California	10/28
44 a, 11 digs	at #2 Stanford	10/26
44 a, 11 digs	at #5 USC	10/7
52 a, 13 digs	v WSU	9/21
50 a, 17 digs	v Gonzaga	9/15
58 a, 10 digs	v Wyoming	9/7
59 a, 17 digs	at UCI	8/31
30 a, 13 digs	v Idaho St	8/24

Freshman Records

Kills (Match)

28	Macey Gardner	8/31/12
----	---------------	---------

Kills (Season)

475	Christine Garner	1992
447	Macey Gardner	2012

2012 Win Streaks

6 games, Aug. 24-Sept. 1

8/24	Idaho State	3-2
8/25	Fresno State	3-0
8/25	UTEP	3-1
8/31	UC Irvine	3-2
8/31	Colgate	3-0
9/1	Loyola Marymount	3-1

5 games, Sept. 8-Sept. 15

9/8	C. of Charleston	3-0
9/14	Villanova	3-0
9/14	UC Riverside	3-1
9/15	Florida Atlantic	3-0
9/15	Gonzaga	3-1

Career Records

Digs

7th	1277	Stephanie Preach
6th	1284	Leanne Schuster

Block Assists

5th	286	Erica Wilson
4th	296	Tammy Webb

Total Blocks

8th	313	Erica Wilson
7th	328	Amy Nelson
6th	341	Tracey Barnerie

The last time ASU...

Won a Pac-12 match on the road...
 Oct. 28, 2012 at California W, 3-2
 Previously was...
 Oct. 15, 2011 at Colorado W, 3-0

Beat a ranked opponent...
 Nov. 24, 2010 at #2 Cal W, 3-2

Was ranked...
 Nov. 4, 2002 at #23

Was in the NCAA Tournament...
 2006 - in Gainesville Fla.
 W, 3-1 vs. College of Charleston
 L, 3-1 vs. No. 7 Florida

Single-Season Records

Kills

12th	447	Macey Gardner
11th	456	Amanda Burbridge
10th	459	Sarah Reaves
9th	475	Christine Garner

Digs

12th	436	Stephanie Preach
11th	450	Sarah Johnson
10th	464	Jami Coughlin
9th	465	Tammy Webb

TEAM RECORDS *season since 1973 (team match since 2011/Pac-12)

STATISTICS	Block Assists Season: 1990, 627 Team Match: 2011, 18.0 Match: 1988, 12 by Meidinger Digs Season: 1990, 2560 Team Match: 2011 & 12, 96 Match: 2006, 50 by Donahue Aces Season: 1984, 286 Team Match: 2011, 9 Match: 1984, 9 by Stahl	SUPERLATIVES	Conference Wins (since 1986 in Pac-10) High: 13, 1993, 1986 Low: 3, 2009, 2005 Conference Losses (since 1986 in Pac-10) High: 17, 2011 Low: 5, 1993, 1986 Longest Win Streak Season: 1986, 13 Best Program Start: 1985, 9-0 All-Americans Season: 2, 1986	Games Played High: 47, 1982 Low: 17, 1974 Games Won High: 31, 1982 Games Lost Low: 0, 1973 Games Won (Since 1993) (Home) High: 12, 1993 Low: 4, 2004, 03, 01 Games Won (Since 1993) (Away) High: 8, 1997, 1995, 1993 Low: 1, 2011
Kills Season: 1986, 2004 Team Match: 2012, 74 2x Match: 2000, 39 by Burbridge Assists Season: 2000, 1765 Team Match: 2012, 70 Match: 1987, 90 by Stahl Block Solos Season: 1985, 277 Match: 1985, 9 by Barberie				

2012 INDIVIDUAL MATCH HIGHS AT A GLANCE

Player	Kills	Attack %	Assists	BS	BA	Digs	Aces
Binns	7, 2x	.500, 2x		1, 2x	4, 9/15	1, 2x	
Checkal							
Clause							
Follette	11, 10/12	.727, 9/30	2, 8/24	2, 8/31	8, 10/12	5, 10/26	4, 10/26
Fontes							
Francis			1, 5x			9, 10/20	1, 9/7
Gardner	28, 8/31	.484, 8/31	2, 4x	1, 2x	4, 2x	21, 10/7	2, 2x
Jorgensen			2, 9/21			2, 2x	1, 4x
Katolik							
McCready	1, 10/5		29, 9/30		1, 9/30	4, 9/30	2, 9/30
Palmer	3, 8/24		59, 8/31	1, 9/15	6, 10/28	17, 2x	3, 9/1
Pinson	12, 8/24	.750, 9/14	1, 5x	2, 9/15	10, 9/1	5, 8/31	2, 10/5
Preach	1, 3x		9, 8/31			30, 10/7	2, 2x
Terhune	1, 9/15		1, 9/15				
Teslevich			3, 8/25			22, 8/31	1, 2x
Tuioti-Mariner	15, 9/7	.333, 2x	2, 2x	1, 2x	6, 9/7	18, 10/28	4, 9/14
Wilson	24, 8/25	.458, 8/25	2, 10/28	2, 8/31	5, 9/8	5, 3x	5, 2x

QUICK FACTS

Location..... Tempe, Ariz.
 Founded 1885
 Enrollment..... 72,250
 Colors Maroon & Gold
 Joined Pac-12..... 1978-79
 President.....Dr. Michael Crow
 VP for Sun Devil Athletics... Steve Patterson

Head Coach.....Jason Watson
 Career Record..... 137-103
 Arizona State Record..... 63-85
 Assistant Coach..... Sammi Stuart
 Assistant Coach..... Linda Hampton
 Assistant Coach.....Mike Wall
 Volleyball Office Phone..... 480-965-7178

Stadium Wells Fargo Arena
 Capacity 10,734

Fax 480-965-5408
 Volleyball SID..... Corinne Calabro
 Office 480-965-1237
 e-mail..... corinne.calabro@asu.edu
 Cell 316-519-4819
 Local Radio.....Blaze Radio
 Ticket Office 480-727-0000

Online www.thesundevils.com

2012 Roster

No.	Name	Pos	Height	Year	Hometown/Last School
24	Mercedes Binns	MB	6-2	FR	South Pasadena, Calif./South Pasadena
20	Jordy Checkal	LiberoS	5-7	FR	San Diego, Calif./Point Loma
11	Sarah Clause	OH	6-0	SR	Gilbert, Ariz./Long Beach State
8	Whitney Follette	OH	6-2	FR	Edmonton, Canada/Paul Kane
13	Katie Fontes	LiberO	5-4	SO	Rocklin, Calif./St. Francis
14	Caitlyn Francis	LiberO	5-10	JR	Roseville, Calif./California
12	Macey Gardner	OH	6-0	FR	Gilbert, Ariz./Gilbert
17	Bethany Jorgensen	OH	5-11	JR	Tempe, Ariz./Corona del Sol
18	Julia Katolik	MB	6-4	SO	New Philadelphia, Greece
7	Shannan McCready	Setter	5-7	SO	Aiea, Hawaii/Punahou School
23	Allison Palmer	Setter	5-9	FR	Laguna, Calif./Laguna Beach
5	Alexis Pinson	MB	6-2	JR	Phoenix, Ariz./Xavier College Prep
6	Stephanie Preach	LiberO	5-8	JR	Phoenix, Ariz./Xavier College Prep
4	Jenny Teslevich	LiberO	5-9	JR	Phoenix, Ariz./Xavier College Prep
1	Nora Tuioti-Mariner	OH	6-1	SO	Corona, Calif./Corona
10	Erica Wilson	OH	6-0	SR	Oceanside, Calif./Fallbrook

Team Information

Letterwinners Returning/Lost.....12/5
 Starters Returning/Lost..... 4 + Libero/3
 Newcomers 4
 2011 RECAP
 Overall Record/Finish9-22
 Conference Record/Finish 5-17/10th
 Home Record..... 6-8
 Away Record..... 1-12
 Postseason.....n/a

2011 Trophy Case

COBRA Magazine Honorable Mention
 Erica Wilson

Pac-12 All-Freshman
 Honorable Mention: Nora Tuioti-Mariner

Pac-12 Players of the Week
Defensive: Stephanie Preach (Nov. 14)
Freshman: Nora Tuioti-Mariner (Nov. 14)

Pac-12 All-Academic
First Team: Caitlyn Francis (Murphy)
Second Team: Danica Mendivil
Honorable Mention: Ashley Kastl, Sonja Markanovich, Sarah McGaffin, Alexis Pinson, Stephanie Preach

 @SunDevilVB
 @SparkyArizonaSt

Sun Devil Volleyball
Arizona State Sun Devils



Record Holders

Kills
 Career: 1871, Christine Garner 1992-95
 Season: 599, Amanda Burbridge.....2000
 Match: 39, Amanda Burbridge10/20/00

Assists
 Career: 5180, Regina Stahl..... 1984-1987
 Season: 1452, Cheryl Anglin.....2000
 Match: 90, Regina Stahl..... 10/10/87

Total Blocks
 Career: 530, Tina Berg..... 1987-90
 Season: 260, Tina Berg 1990

Digs
 Career: 2385, Sydney Donahue 2004-07
 Season: 742, Sydney Donahue..... 2006
 Match: 50, Sydney Donahue..... 8/26/06

Service Aces
 Career: 178, Regina Stahl..... 1984-87
 Season: 65, Regina Stahl..... 1984
 Match: 9, Regina Stahl 9/7/84

HEAD COACH JASON WATSON



Career Record
 136-103 (8 Years)
Record at Arizona State
 63-85 (5 Years)
Record in the NCAA Postseason
 3 appearances, 4-3
 at BYU 2007 3-1; 2006 1-1; 2005 0-1

WATSON YEAR-BY-YEAR

Season	School	Overall	Pct.	Conf.	Finish	Postseason
2012	ASU	15-10	.600	4-8		
2011	ASU	9-22	.290	5-17	10th	
2010	ASU	13-18	.419	7-11	8th	
2009	ASU	13-17	.433	3-15	9th	
2008	ASU	13-18	.419	4-14	8th	
2007	BYU	24-8	.750	12-4	3rd	NCAA Regional
2006	BYU	25-6	.806	13-3	2nd	NCAA 1st Round
2005	BYU	25-4	.862	14-2	1st	NCAA 1st Round
ASU	5 Seasons	63-85	.426	23-65		
Totals	8 Seasons	137-103	.571	62-74		3 Appearances (4-3)

2012 Schedule

8/24	Idaho State	W, 3-2
8/25	Fresno State	W, 3-1
8/25	at UTEP	W, 3-0
8/31	at UC Irvine	W, 3-2
8/31	Colgate	W, 3-0
9/1	at Loyola Marymount	W, 3-1
9/7	Wyoming	L, 3-2
9/7	at Kansas	L, 3-1
9/8	College of Charleston	W, 3-0
9/14	Villanova	W, 3-0
9/14	UC Riverside	W, 3-1
9/15	Florida Atlantic	W, 3-0
9/15	Gonzaga	W, 3-1
9/18	at Arizona	L, 3-1
9/21	Washington State	W, 3-1
9/28	California	W, 3-0
9/30	Stanford	L, 3-1
10/5	at UCLA	L, 3-0
10/7	at USC	L, 3-1
10/12	at Colorado	L, 3-2
10/14	at Utah	L, 3-0
10/19	Oregon State	W, 3-0
10/20	Oregon	L, 3-0
10/26	at Stanford	L, 3-1
10/28	at California	W, 3-2
11/2	USC	6 p.m.
11/3	UCLA	7 p.m.
11/8	at Oregon State	7 p.m. MT
11/9	at Oregon	8 p.m. MT
11/16	Utah	7 p.m. MT
11/18	Colorado	5 p.m. MT
11/21	at Washington	9 p.m. MT
11/23	Arizona	6 p.m. MT

All times PT unless noted

2011 Results

8/26	vs. Denver	W	3-0
8/27	vs. UW-Milwaukee	W	3-1
8/27	vs. San Jose State	L	3-1
9/2	vs. Iowa	L	3-1
9/2	@ #19 Iowa State	L	3-1
9/3	vs. Southern Miss	W	3-1
9/9	vs. Georgia Southern	W	3-1
9/10	vs. #19 USD	L	3-0
9/10	@ North Carolina	L	3-0
9/16	@ Oregon State	L	3-2
9/18	@ #16 Oregon	L	3-1
9/23	Washington State	L	3-2
9/25	#4 Washington	L	3-0
9/30	@ #6 Stanford	L	3-0
10/1	@ California	L	3-1
10/7	#2 UCLA	L	3-0
10/8	#5 USC	L	3-1
10/14	@ Utah	L	3-0
10/15	@ Colorado	W	3-0
10/21	#2 California	L	3-0
10/22	#5 Stanford	L	3-1
10/28	@ #10 Washington	L	3-2
10/29	@ Washington State	L	3-0
11/4	#20 Oregon	L	3-1
11/5	Oregon State	W	3-0
11/11	Colorado	W	3-1
11/12	Utah	W	3-2
11/18	@ #1 USC	L	3-1
11/20	@ #2 UCLA	L	3-0
11/22	@ Arizona	L	3-1
11/26	Arizona	W	3-1

Year-by-Year

Record (Since 1973)

Year	Conf.		Overall		Post.
	W-L	Fin.	W-L	Post.	
2011	5-17	10	9-22		
2010	7-11	t7	13-18		
2009	3-15	t9	13-17		
2008	4-14	8	13-18		
2007	7-11	7	15-16		
2006	7-11	t5	16-15	NCAA	
2005	3-15	8	8-20		
2004	5-13	t7	10-17		
2003	4-14	9	9-18		
2002	8-10	7	15-12	NCAA	
2001	5-13	7	10-16		
2000	9-9	t5	18-12	NCAA	
1999	10-8	5	14-13	NCAA	
1998	8-10	t5	11-14		
1997	4-14	8	13-16		
1996	4-14	8	9-15		
1995	11-7	t4	19-8	NCAA	
1994	11-7	4	18-10	NCAA	
1993	13-5	t2	20-8	NCAA	
1992	11-7	4	23-8	NCAA	
1991	8-10	6	14-12		
1990	8-10	6	19-16	NCAA	
1989	4-14	9	13-21		
1988	8-10	5	20-13	NCAA	
1987	9-9	7	16-15	NCAA	
1986	13-5	3	27-7	NCAA	
1985	2-6		22-13	NCAA	
1984	3-11		15-18		
1983	6-8		17-17	NCAA	
1982	8-6		31-16	NCAA	
1981	4-8		13-16	NCAA	
1980	4-8		24-17		
1979	4-8		13-9		
1978	9-4		13-7		
1977	8-4	t4	14-8		
1976	11-1	5	15-7		
1975	13-5		21-8		
1974	10-2		11-6	AIAW Champ	
1973	8-0	1	21-0	AIAW Champ	

2011 Arizona State Volleyball
Arizona State Combined Team Statistics (as of Nov 27, 2011)
All matches

Overall record: 9-22 Conf: 5-17 Home: 6-8 Away: 1-12 Neutral: 2-2

#	Player	sp	Attack					Set		Serve			Dig		Blocking					points		
			k	k/s	e	ta	pct	a	a/s	sa	se	sa/s	re	dig	dig/s	bs	ba	total	blk/s		be	bhe
21	McGaffin, Sarah	54	20	0.37	4	43	.372	556	10.30	6	24	0.11	0	105	1.94	2	13	15	0.28	2	2	34.5
10	Wilson, Erica	116	275	2.37	93	560	.325	10	0.09	21	40	0.18	2	80	0.69	5	80	85	0.73	16	2	341.0
5	Pinson, Alexis	51	72	1.41	30	173	.243	0	0.00	0	0	0.00	1	8	0.16	3	49	52	1.02	5	0	99.5
2	Markanovich, Sonja	69	89	1.29	42	209	.225	2	0.03	0	0	0.00	1	23	0.33	5	76	81	1.17	8	0	132.0
7	McCready, Shannan	64	9	0.14	4	29	.172	689	10.77	12	23	0.19	0	132	2.06	1	22	23	0.36	1	11	33.0
15	Kastl, Ashley	111	424	3.82	217	1331	.156	8	0.07	12	33	0.11	22	233	2.10	8	42	50	0.45	5	0	465.0
1	Tuioti-Mariner, Nora	103	259	2.51	136	878	.140	16	0.16	16	13	0.16	27	233	2.26	6	77	83	0.81	5	1	319.5
9	Terhune, Kylee	44	76	1.73	42	246	.138	3	0.07	0	0	0.00	0	11	0.25	3	17	20	0.45	1	0	87.5
16	Mendivil, Danica	69	178	2.58	99	640	.123	4	0.06	3	4	0.04	10	72	1.04	3	19	22	0.32	4	0	193.5
8	Bachynski, Malia	27	41	1.52	26	148	.101	0	0.00	1	1	0.04	0	5	0.19	0	23	23	0.85	1	0	53.5
11	Clause, Sarah	11	15	1.36	14	69	.014	0	0.00	0	2	0.00	2	10	0.91	0	2	2	0.18	0	0	16.0
6	Preach, Stephanie	116	2	0.02	2	22	.000	53	0.46	24	46	0.21	14	610	5.26	0	0	0	0.00	0	1	26.0
4	Teslevich, Jenny	54	0	0.00	0	0	.000	6	0.11	8	8	0.15	10	120	2.22	0	0	0	0.00	0	0	8.0
17	Jorgensen, Bethany	25	2	0.08	3	12	-.083	2	0.08	3	3	0.12	3	31	1.24	0	1	1	0.04	0	0	5.5
14	Murphy, Caitlyn	66	0	0.00	1	8	-.125	1	0.02	8	17	0.12	13	112	1.70	0	0	0	0.00	0	0	8.0
ARIZONA STATE		116	1462	12.60	713	4368	.171	1350	11.64	114	214	0.98	116	1785	15.39	36	421	246.5	2.12	48	17	1822.5
Opponents		116	1582	13.64	628	4278	.223	1482	12.78	116	211	1.00	114	1858	16.02	53	491	298.5	2.57	56	25	1996.5

**2012 Arizona State Volleyball
Arizona State Combined Team Statistics (as of Oct 28, 2012)
All matches**

RECORD:	OVERALL	HOME	AWAY	NEUTRAL
ALL GAMES	15-10	7-2	4-7	4-1
CONFERENCE	4-8	3-2	1-6	0-0
NON-CONFERENCE	11-2	4-0	3-1	4-1

#	Player	sp	Attack				Set		Serve			Dig		Blocking					bhe	points		
			k	k/s	e	ta	pct	a	a/s	sa	se	sa/s	re	dig	dig/s	bs	ba	total			blk/s	be
6	Preach, Stephanie	95	3	0.03	0	5	.600	80	0.84	10	10	0.11	12	436	4.59	0	0	0	0.00	0	3	13.0
23	Palmer, Allison	92	11	0.12	0	31	.355	1052	11.43	16	23	0.17	0	207	2.25	1	30	31	0.34	3	4	43.0
5	Pinson, Alexis	95	156	1.64	42	365	.312	8	0.08	5	17	0.05	1	29	0.31	7	83	90	0.95	3	0	209.5
24	Binns, Mercedes	25	33	1.32	12	69	.304	0	0.00	0	0	0.00	1	2	0.08	2	19	21	0.84	2	0	44.5
7	McCready, Shannan	7	1	0.14	0	4	.250	55	7.86	2	1	0.29	0	6	0.86	0	1	1	0.14	0	0	3.5
8	Follette, Whitney	78	124	1.59	53	308	.231	9	0.12	17	32	0.22	1	39	0.50	8	62	70	0.90	9	1	180.0
12	Gardner, Macey	95	447	4.71	190	1217	.211	16	0.17	13	19	0.14	26	235	2.47	4	26	30	0.32	5	0	477.0
10	Wilson, Erica	95	403	4.24	201	1023	.197	5	0.05	30	41	0.32	1	51	0.54	8	41	49	0.52	7	1	461.5
1	Tuioti-Mariner, Nora	92	158	1.72	74	485	.173	11	0.12	15	19	0.16	12	136	1.48	4	63	67	0.73	3	2	208.5
17	Jorgensen, Bethany	44	0	0.00	0	3	.000	3	0.07	4	4	0.09	1	8	0.18	0	0	0	0.00	0	0	4.0
4	Teslevich, Jenny	75	0	0.00	0	0	.000	5	0.07	2	4	0.03	6	149	1.99	0	0	0	0.00	0	0	2.0
14	Francis, Caitlyn	88	0	0.00	1	5	-.200	5	0.06	1	0	0.01	12	118	1.34	0	0	0	0.00	0	0	1.0
9	Terhune, Kylee	3	1	0.33	2	4	-.250	1	0.33	0	0	0.00	0	0	0.00	0	0	0	0.00	0	0	1.0
	TEAM	-	-	-	-	-	-	-	-	-	-	-	3	-	-	-	-	-	-	-	-	-
	ARIZONA STATE	95	1337	14.07	575	3519	.217	1250	13.16	115	170	1.21	76	1416	14.91	34	325	196.5	2.07	32	11	1648.5
	Opponents	95	1113	11.72	487	3260	.192	1051	11.06	76	145	0.80	115	1340	14.11	44	476	282.0	2.97	44	16	1471.0

Team Statistics	ASU	OPP	Date	Opponent	Score	Score by set	Att.
ATTACK			!Aug 24	vs Idaho State	w 3-2	20-25,25-17,22-25,29-27,16-14	212
Kills	1337	1113	!Aug 25	vs Fresno State	w 3-0	25-22,25-11,25-19	192
Errors	575	487	!Aug 25	at UTEP	w 3-1	23-25,25-23,26-24,25-21	543
Total Attacks	3519	3260	@Aug 31	at UC Irvine	w 3-2	25-21,23-25,25-13,18-25,15-11	178
Attack Pct	.217	.192	@Aug 31	vs Colgate	w 3-0	25-18,25-18,25-9	140
Kills/Set	14.1	11.7	@Sep 01	at LMU	w 3-1	25-27,25-23,25-21,25-18	117
SET			#Sep 07	vs Wyoming	L 2-3	23-25,25-18,25-18,24-26,11-15	148
Assists	1250	1051	#Sep 07	at Kansas	L 1-3	25-20,19-25,24-26,23-25	967
Attempts	3481	3293	#Sep 08	vs College of Charlesto	w 3-0	25-17,25-12,25-21	61
Assist Pct	.359	.319	\$Sep 14	VILLANOVA	w 3-0	25-9,25-9,25-22	303
Assists/Set	13.2	11.1	\$Sep 14	UC RIVERSIDE	w 3-1	25-16,23-25,25-22,25-12	493
SERVE			\$Sep 15	FLORIDA ATLANTIC	w 3-0	25-11,25-13,25-20	363
Aces	115	76	\$Sep 15	GONZAGA	w 3-1	25-20,23-25,25-11,25-13	593
Errors	170	145	*Sep 18	at Arizona	L 1-3	20-25,16-25,25-20,21-25	1623
Attempts	2116	1976	*Sep 21	WASHINGTON STATE	w 3-1	25-18,20-25,25-21,25-23	833
Serve Pct	.920	.927	*Sep 28	CALIFORNIA	w 3-0	25-17,25-19,25-14	883
Aces/Set	1.2	0.8	*Sep 30	#7 STANFORD	L 1-3	27-29,17-25,28-26,23-25	1583
SERVE RECEPTIONS			*Oct 05	at #6 UCLA	L 0-3	22-25,13-25,15-25	903
Errors	76	115	*Oct 07	at #5 USC	L 1-3	17-25,25-23,20-25,23-25	1935
Errors/Set	0.8	1.2	*Oct 12	at Colorado	L 2-3	25-17,25-17,18-25,21-25,9-15	3117
DEFENSE			*Oct 14	at Utah	L 0-3	15-25,16-25,22-25	608
Digs	1416	1340	*Oct 19	OREGON STATE	w 3-0	25-12,25-20,25-16	1873
Digs/Set	14.9	14.1	*Oct 20	#3 OREGON	L 0-3	15-25,23-25,20-25	1323
BLOCKING			*Oct 26	at #2 Stanford	L 1-3	15-25,25-19,16-25,20-25	2886
Block Solo	34	44	*Oct 28	at California	w 3-2	25-23,23-25,25-18,13-25,16-14	476
Block Assist	325	476					
Total Blocks	196.5	282.0					
Blocks/Set	2.1	3.0					
Block Errors	32	44					
Ball handling errors	11	16					
ATTENDANCE							
Total	8247	13353					
Dates/Avg Per Date	9/916	11/1214					
Neutral site #/Avg	5/151						
Current win streak	1	-					
Home win streak	0	-					

! El Paso Sports Commission Invitational
@ UCI/LMU Dual Classic
Jayhawk Invitational
\$ ASU Sheraton Invitational

Record in 3-set matches: 7-3
Record in 4-set matches: 5-5
Record in 5-set matches: 3-2

**2012 Arizona State Volleyball
Arizona State Combined Team Statistics (as of Oct 28, 2012)
Conference matches**

RECORD:	OVERALL	HOME	AWAY	NEUTRAL
ALL GAMES	4-8	3-2	1-6	0-0
CONFERENCE	4-8	3-2	1-6	0-0
NON-CONFERENCE	0-0	0-0	0-0	0-0

#	Player	sp	Attack				Set		Serve			re	Dig		Blocking					points		
			k	k/s	e	ta	pct	a	a/s	sa	se		sa/s	dig	dig/s	bs	ba	total	blk/s		be	bhe
6	Preach, Stephanie	45	1	0.02	0	1	1.000	34	0.76	4	1	0.09	5	191	4.24	0	0	0	0.00	0	1	5.0
23	Palmer, Allison	42	3	0.07	0	6	.500	456	10.86	5	9	0.12	0	91	2.17	0	16	16	0.38	0	2	16.0
5	Pinson, Alexis	45	59	1.31	20	155	.252	3	0.07	2	6	0.04	0	16	0.36	2	25	27	0.60	2	0	75.5
7	McCready, Shannan	7	1	0.14	0	4	.250	55	7.86	2	1	0.29	0	6	0.86	0	1	1	0.14	0	0	3.5
8	Follette, Whitney	44	76	1.73	32	185	.238	5	0.11	7	15	0.16	1	26	0.59	5	40	45	1.02	4	0	108.0
10	Wilson, Erica	45	190	4.22	98	483	.190	2	0.04	7	20	0.16	1	26	0.58	3	13	16	0.36	6	0	206.5
12	Gardner, Macey	45	206	4.58	104	598	.171	6	0.13	6	6	0.13	15	108	2.40	1	9	10	0.22	1	0	217.5
1	Tuioti-Mariner, Nora	42	69	1.64	41	227	.123	6	0.14	4	8	0.10	8	90	2.14	2	21	23	0.55	1	2	85.5
14	Francis, Caitlyn	39	0	0.00	0	4	.000	1	0.03	0	0	0.00	4	59	1.51	0	0	0	0.00	0	0	0.0
17	Jorgensen, Bethany	24	0	0.00	0	3	.000	3	0.12	1	2	0.04	1	4	0.17	0	0	0	0.00	0	0	1.0
4	Teslevich, Jenny	27	0	0.00	0	0	.000	0	0.00	0	0	0.00	1	40	1.48	0	0	0	0.00	0	0	0.0
9	Terhune, Kylee	1	0	0.00	0	0	.000	0	0.00	0	0	0.00	0	0	0.00	0	0	0	0.00	0	0	0.0
24	Binns, Mercedes	8	5	0.62	7	18	-.111	0	0.00	0	0	0.00	1	1	0.12	0	3	3	0.38	1	0	6.5
	TEAM	-	-	-	-	-	-	-	-	-	-	-	3	-	-	-	-	-	-	-	-	-
	ARIZONA STATE	45	610	13.56	302	1684	.183	571	12.69	38	68	0.84	40	658	14.62	13	128	77.0	1.71	15	5	725.0
	Opponents	45	585	13.00	207	1580	.239	552	12.27	40	66	0.89	38	646	14.36	23	259	152.5	3.39	17	7	777.5

Team Statistics	ASU	OPP
ATTACK		
Kills	610	585
Errors	302	207
Total Attacks	1684	1580
Attack Pct	.183	.239
Kills/Set	13.6	13.0
SET		
Assists	571	552
Attempts	1659	1553
Assist Pct	.344	.355
Assists/Set	12.7	12.3
SERVE		
Aces	38	40
Errors	68	66
Attempts	945	1005
Serve Pct	.928	.934
Aces/Set	0.8	0.9
SERVE RECEPTIONS		
Errors	40	38
Errors/Set	0.9	0.8
DEFENSE		
Digs	658	646
Digs/Set	14.6	14.4
BLOCKING		
Block Solo	13	23
Block Assist	128	259
Total Blocks	77.0	152.5
Blocks/Set	1.7	3.4
Block Errors	15	17
Ball handling errors	5	7
ATTENDANCE		
Total	6495	11548
Dates/Avg Per Date	5/1299	7/1650
Neutral site #/Avg	0/0	
Current win streak	1	-
Home win streak	0	-

Date	Opponent	Score	Score by set	Att.
*Sep 18	at Arizona	L 1-3	20-25,16-25,25-20,21-25	1623
*Sep 21	WASHINGTON STATE	w 3-1	25-18,20-25,25-21,25-23	833
*Sep 28	CALIFORNIA	w 3-0	25-17,25-19,25-14	883
*Sep 30	#7 STANFORD	L 1-3	27-29,17-25,28-26,23-25	1583
*Oct 05	at #6 UCLA	L 0-3	22-25,13-25,15-25	903
*Oct 07	at #5 USC	L 1-3	17-25,25-23,20-25,23-25	1935
*Oct 12	at Colorado	L 2-3	25-17,25-17,18-25,21-25,9-15	3117
*Oct 14	at Utah	L 0-3	15-25,16-25,22-25	608
*Oct 19	OREGON STATE	w 3-0	25-12,25-20,25-16	1873
*Oct 20	#3 OREGON	L 0-3	15-25,23-25,20-25	1323
*Oct 26	at #2 Stanford	L 1-3	15-25,25-19,16-25,20-25	2886
*Oct 28	at California	w 3-2	25-23,23-25,25-18,13-25,16-14	476

! El Paso Sports Commission Invitational
@ UCI/LMU Dual Classic
Jayhawk Invitational
\$ ASU Sheraton Invitational

Record in 3-set matches: 2-3
Record in 4-set matches: 1-4
Record in 5-set matches: 1-1



JASON WATSON YEAR-BY-YEAR SUN DEVIL RECORDS

Season	School	Overall	Pct.	Conf.	Finish
2012	ASU	15-10	.600	4-8	
2011	ASU	9-22	.290	5-17	10th
2010	ASU	13-18	.419	7-11	8th
2009	ASU	13-17	.433	3-15	9th
2008	ASU	13-18	.419	4-14	8th
ASU	5 Seasons	63-85	.426	23-65	



WATSON IN THE POSTSEASON

At BYU

2007 3-1

2006 1-1

2005 0-1

3 appearances, 4-3

WATSON IN THE POSTSEASON

2007 (At BYU)

First and Second Rounds, Seattle, Wash. (Washington)

Nov. 30 vs. Ole Miss; W 3-0 (30-27, 30-21, 30-24)

Dec. 1 at No. 6 Washington; W 3-2 (30-28, 28-30, 25-30, 30-22, 15-13)

Regionals, University Park, Pa. (Penn State)

Dec. 7 vs. No. 16 Middle Tennessee; W 3-0 (30-28, 30-22, 34-32)

Dec. 8 at No. 1 Penn State; L 3-0 (23-30; 15-30; 18-30)

2006 (At BYU)

First and Second Rounds, Los Angeles, Calif. (USC)

Nov. 30 vs. UC Santa Barbara; W 3-2 (27-30; 30-32; 30-27; 30-21; 15-12)

Dec. 1 at No. 6 USC; L 3-0 (25-30; 37-39; 19-30)

2005 (At BYU)

First and Second Rounds, Los Angeles, Calif. (USC)

Dec. 2 vs. Pepperdine; L 3-1 (24-30, 28-30, 30-24, 28-30)

- Named the head coach in 2008, the sixth in program history
- In 2010, ASU upset three ranked opponents: 10/15/10 vs. No. 5 USC (3-1); 10/16/10 vs. No. 10 UCLA (3-1); 11/24/10 vs. No. 2 Cal (3-2).
- In 2009, the Sun Devil squad opened with an 11-3 record, the best start in program history since 1992 when the Sun Devils advanced to a program-best Sweet Sixteen appearance.
- Watson's 2010 recruiting class was in the top-25.
- Watson traveled to Tempe after three stellar seasons as head coach of the Brigham Young University women's volleyball program.
- At BYU, he compiled a 74-18 (.804) overall record while leading them to three-straight NCAA Tournament appearances.
- In only his first season as head coach, he was named the Mountain West Conference Coach of the Year after leading his team to a 25-4 record, the program's best record since 1998.
- In addition to leading BYU to the MWC regular-season title, Watson also helped lead them back to the NCAA Tournament as well.
- In 2007, he led the Cougars to a 24-8 overall record and finish in NCAA Regional Final (Elite 8) as well as a final national ranking of 12th and at one point in the season as high a rank as ninth.
- Watson's teams have been ranked as high as eighth on RPI.
- Prior to his head-coaching debut at BYU in 2005, Watson had amassed 11 years as an assistant coach at four universities.
- Had an All-American playing career at BYU from 1990-1994, where he was a four-year starter and two-time captain.
- Watson coached for two years under his former coach, Carl McGown before beginning his career in women's volleyball with extremely successful stints at Kansas State, Arkansas State and Montana State.
- Graduated from BYU in 1995 with a degree in physical education and sports business management after leaving his native home of Homebush, Australia.
- He and his wife, Larissa, have three children; two sons and a daughter.

NUMERICAL QUICK ROSTER

#	Name	Pos.	Height	Cl.
1	Nora Tuioti-Mariner	OH	6-1	SO
4	Jenny Teslevich	Libero	5-9	JR
5	Alexis Pinson	MB	6-2	JR
6	Stephanie Preach	Libero	5-8	JR
7	Shannan McCready	S	5-7	SO
8	Whitney Follette	OH	6-2	FR
10	Erica Wilson	MB	6-0	SR
11	Sarah Clause	OH	6-0	SR
12	Macey Gardner	OH	6-0	FR
13	Katie Fontes	Libero	5-4	SO
14	Caitlyn Francis	Libero	5-10	JR
17	Bethany Jorgensen	OH	5-11	JR
18	Julia Katolik	MB	6-4	SO
20	Jordy Checkal	Lib/S	5-7	FR
23	Allison Palmer	S	5-9	FR
24	Mercedes Binns	MB	6-2	FR



24 | Mercedes Binns
MB | 6-2 | Fr.



20 | Jordy Checkal
L/S | 5-7 | Fr.



11 | Sarah Clause
OH | 6-0 | Sr.



8 | Whitney Follette
OH | 6-2 | Fr.



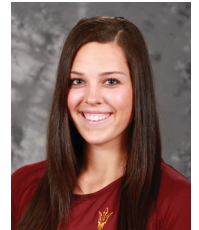
13 | Katie Fontes
L | 5-4 | So.



14 | Caitlyn Francis
L | 5-10 | Jr.



12 | Macey Gardner
OH | 6-0 | Fr.



17 | Bethany Jorgensen
OH | 5-11 | Jr.

ALPHABETICAL QUICK ROSTER

#	Name	Pos.	Height	Cl.
24	Mercedes Binns	MB	6-2	FR
20	Jordy Checkal	Lib/S	5-7	FR
11	Sarah Clause	OH	6-0	SR
8	Whitney Follette	OH	6-2	FR
13	Katie Fontes	Libero	5-4	SO
14	Caitlyn Francis	Libero	5-10	JR
12	Macey Gardner	OH	6-0	FR
17	Bethany Jorgensen	OH	5-11	JR
18	Julia Katolik	MB	6-4	SO
7	Shannan McCready	S	5-7	SO
23	Allison Palmer	S	5-9	FR
5	Alexis Pinson	MB	6-2	JR
6	Stephanie Preach	Libero	5-8	JR
4	Jenny Teslevich	Libero	5-9	JR
1	Nora Tuioti-Mariner	OH	6-1	SO
10	Erica Wilson	MB	6-0	SR



18 | Julia Katolik
MB | 6-4 | So.



7 | Shannan McCready
S | 5-7 | So.



23 | Allison Palmer
S | 5-9 | Fr.



5 | Alexis Pinson
MB | 6-2 | Jr.

Volleyball Information

Head Coach	Jason Watson
ASU Record	324-79 (6 Years)
Associate Coaches	Sammie Stuart
	Linda Hampton-Keith
	Mike Wall



6 | Stephanie Preach
L | 5-8 | Jr.



4 | Jenny Teslevich
L | 5-9 | Jr.



1 | Nora Tuioti-Mariner
OH | 6-1 | So.



10 | Erica Wilson
MB | 6-0 | Sr.

2011 Team Information

Overall Record	9-22
Pac-12 Record	5-17
Pac-12 Final Standing	10th
Home Record	6-8
Away Record	1-12
Letterwinners Returning/Lost	12/5
Starters Returning/Lost	4/3
Newcomers	4



Jason Watson
Head Coach



Sammie Stuart
Assistant Coach



Linda Hampton-Keith
Assistant Coach



Mike Wall
Volunteer Coach

ARIZONA STATE VOLLEYBALL 2012 ROSTER

NUMERICAL ROSTER

No.	Name	Pos	Height	Year	Hometown/Last School
1	Nora Tuioti-Mariner	OH	6-1	SO	Corona, Calif./Corona
4	Jenny Teslevich	Libero	5-9	JR	Phoenix, Ariz./Xavier College Prep
5	Alexis Pinson	MB	6-2	JR	Phoenix, Ariz./Xavier College Prep
6	Stephanie Preach	Libero	5-8	JR	Phoenix, Ariz./Xavier College Prep
7	Shannan McCready	Setter	5-7	SO	Aiea, Hawaii/Punahou School
8	Whitney Follette	OH	6-2	FR	Edmonton, Canada/Paul Kane
10	Erica Wilson	OH	6-0	SR	Oceanside, Calif./Fallbrook
11	Sarah Clause	OH	6-0	SR	Gilbert, Ariz./Long Beach State
12	Macey Gardner	OH	6-0	FR	Gilbert, Ariz./Gilbert
13	Katie Fontes	Libero	5-4	SO	Rocklin, Calif./St. Francis
14	Caitlyn Francis	Libero	5-10	JR	Roseville, Calif./California
17	Bethany Jorgensen	OH	5-11	JR	Tempe, Ariz./Corona del Sol
18	Julia Katolik	MB	6-4	SO	Athens, Greece/Third High School of New Philadelphia
20	Jordy Checkal	Libero/S	5-7	FR	San Diego, Calif./Point Loma
23	Allison Palmer	Setter	5-9	FR	Laguna, Calif./Laguna Beach
24	Mercedes Binns	MB	6-2	FR	South Pasadena, Calif./South Pasadena

ALPHABETICAL ROSTER

No.	Name	Pos	B/T	Year	Hometown/Last School
24	Mercedes Binns	MB	6-2	FR	South Pasadena, Calif./South Pasadena
20	Jordy Checkal	Libero/S	5-7	FR	San Diego, Calif./Point Loma
11	Sarah Clause	OH	6-0	SR	Gilbert, Ariz./Long Beach State
8	Whitney Follette	OH	6-2	FR	Edmonton, Canada/Paul Kane
13	Katie Fontes	Libero	5-4	SO	Rocklin, Calif./St. Francis
14	Caitlyn Francis	Libero	5-10	JR	Roseville, Calif./California
12	Macey Gardner	OH	6-0	FR	Gilbert, Ariz./Gilbert
17	Bethany Jorgensen	OH	5-11	JR	Tempe, Ariz./Corona del Sol
18	Julia Katolik	MB	6-4	SO	Athens, Greece/Third High School of New Philadelphia
7	Shannan McCready	Setter	5-7	SO	Aiea, Hawaii/Punahou School
23	Allison Palmer	Setter	5-9	FR	Laguna, Calif./Laguna Beach
5	Alexis Pinson	MB	6-2	JR	Phoenix, Ariz./Xavier College Prep
6	Stephanie Preach	Libero	5-8	JR	Phoenix, Ariz./Xavier College Prep
4	Jenny Teslevich	Libero	5-9	JR	Phoenix, Ariz./Xavier College Prep
1	Nora Tuioti-Mariner	OH	6-1	SO	Corona, Calif./Corona
10	Erica Wilson	OH	6-0	SR	Oceanside, Calif./Fallbrook

Head Coach: Jason Watson
Assistant Coach: Mike Wall

Assistant Coach: Linda Hampton-Keith
Manager: Whitney Perkins

Assistant Coach: Sammi Stuart
SID: Corinne Calabro

Pronunciations

Jordy **Check-ul**

Whitney **Fol-et**

Katie **Fonts**

Bethany **Jor-gen-sin**

Julia **Cat-o-lick**

Shannon McCready

Jenny **Tes-la-vich**

Nora **Too-e-oh-TEE Mare-in-er**



MERCEDES BINNS

6-2 • MB • Fr.

MB

SOUTH PASADENA, CALIF.

SOUTH PASADENA HS **24**

2012 HIGHS

Kills	7, 2x, last vs. FAU 9/15/12
Points	8.5, 2x, last vs. FAU 9/15/12
Attack %	.500, 2x, last vs. FAU 9/15/12
Assists	--
Service Aces	--
Digs	1, 2x, last vs. Stanford 9/30/12
Block Solos	1, 2x, last vs. Gonzaga 9/15/12
Block Assists	4, vs. Gonzaga 9/15/12

High School:

2011 graduate of South Pasadena High School. Played for head coach Jessica Barreto. Was named First Team All Rio-Hondo League in 2009 and 2010. Played club volleyball for Club West, based out of Rancho Cucamonga, Calif., for coach Kurt Arron.

Personal:

An exploratory major, full name is Mercedes Destiny Binns. Born May 2, 1994 in Orlando, Fla. Parents are Teviin and Cassandra Binns.

Year	SP	K	K/S	PCT	AST	AST/S	SA	SE	DIG	DIG/S	BS	BA	TOTAL	BLK/S	POINTS
2012	25	33	1.32	.304	0	0.00	0	0	2	0.08	2	19	21	0.84	44.5
Total	25	33	1.32	.304	0	0.00	0	0	2	0.08	2	19	21	0.84	44.5



JORDY CHECKAL

5-7 • L/S • RS Fr.

LIBERO/SETTER

SAN DIEGO, CALIF.

POINT LOMA HS

20

2012 HIGHS

Kills	--
Points	--
Attack %	--
Assists	--
Service Aces	--
Digs	--
Block Solos	--
Block Assists	--

2011 (Freshman):

Redshirt freshman.

High School:

A 2011 graduate of Point Loma High School in San Diego, Calif. Was a four-time letter winner for the Pointers under co-head coaches Mike Placek and Davis Kansen. Played setter and libero positions, Checkal was all-league, team MVP, and captain for four years. Also played varsity soccer her freshman year. Made the honor roll twice and was named the Union Tribune All-Academic Athlete her senior year (2011).

Personal:

Full name is Jordan Lyn Checkal. Parents are Brian and Michelle Checkal of San Diego, Calif. Has one brother, Dillon. Born Feb. 20, 1993 in San Diego, Calif. Majoring in exploratory.



SARAH CLAUSE
 6-0 • OH • Sr.
 OH
 GILBERT, ARIZ.
 LONG BEACH STATE **11**

Career HIGHS		2012 HIGHS	
Kills	5, at Arizona 11/22/11	Kills	--
Points	5, at Arizona 11/22/11	Points	--
Attack %	.143, at Arizona 11/22/11	Attack %	--
Assists	--	Assists	--
Service Aces	--	Service Aces	--
Digs	3, 2x last vs. Washington 9/25/11	Digs	--
Block Solos	--	Block Solos	--
Block Assists	1, 2x, last at California 10/1/11	Block Assists	--

2011 (Junior):

Contributed 15 kills playing in 11 sets in debut year on the Sun Devil squad. Grabbed 16.0 points for ASU. Also recorded two block assists for a 0.18 block per set average.

2009-10 (Long Beach State):

Played in 12 matches as a sophomore outside and five sets during her freshman campaign in 2009. As a sophomore, collected 43 kills for a 1.13 kills per set average and also posted 35 blocks on defense for her team.

High School:

A 2009 graduate of Gilbert High School in Gilbert, Ariz. A four-time letter winner for the Tigers. Was 2008 Fiesta Region Player of the Year. Clause helped lead the Tigers to a state championship in 2006. Was also a member of the the Arizona Volleyball Academy.

Personal:

A communication major, her full name is Sarah Renee Clause. Parents are Michael and Becky Clause of Gilbert, Ariz. Born Feb. 27, 1991.

Year	SP	K	K/S	PCT	AST	AST/S	SA	SE	DIG	DIG/S	BS	BA	TOTAL	BLK/S	POINTS
2011	11	15	1.36	0.014	0	0	0	2	10	0.91	0	2	2	0.18	16.0
Total	11	15	1.36	0.014	0	0	0	2	10	0.91	0	2	2	0.18	16.0



WHITNEY FOLLETTE

6-2 • OH • Fr.

OH

EDMONTON, CANADA

PAUL KANE HS 

2012 HIGHS

Kills	11, at Colorado 10/12/12
Points	15, at Colorado 10/12/12
Attack %	.727, vs. Cal 9/28/12
Assists	2, vs. Idaho State 8/24/12
Service Aces	4, at Stanford 10/26/12
Digs	5, at Stanford 10/26/12
Block Solos	2, at UC Irvine 8/31/12
Block Assists	8, at Colorado 10/12/12

High School:

Under head coach Stan Andronyk, she played three years of volleyball in the Metro Edmonton Premier League and accumulated a lengthy trophy case. Follette was a multiple-sport athlete lettering in volleyball, basketball, track & field and badminton at Paul Kane High School. Her high school volleyball accolades include: (2011) - PKHS Award of Distinction and Sportsmanship Award, (2010) - PKHS Rookie of the Year, (2009-11) - PKHS Bronze, Silver, Gold and Platinum Athletic Award winner. Played club for Jen Telfer on the U18 Pandas. Follette is a three-time All-Star: (2011) - U17 All-Star Provincials, U21 All-Star Provincials and (2012) U18 All-Star. Helped lead her team to a U18 Provincial Championship in 2012 while being named a National Team Challenge Cup All-Star.

Personal:

An exploratory major. Full name is Whitney Elise Follette; her parents are Willie and Maureen Follette. Has one brother, Matthew, and one sister, Mary. Cousin, Jordan Parkin, plays volleyball at Mount Royal University in Calgary, Alberta.

Year	SP	K	K/S	PCT	AST	AST/S	SA	SE	DIG	DIG/S	BS	BA	TOTAL	BLK/S	POINTS
2012	78	124	1.59	.231	9	0.12	17	32	39	0.50	8	62	70	0.90	180.0
Total	78	124	1.59	.231	9	0.12	17	32	39	0.50	8	62	70	0.90	180.0



KATIE FONTES

5-4 • Libero • So.

LIBERO

ROCKLIN, CALIF.

ST. FRANCIS HS

13

2012 HIGHS

Kills	--
Points	--
Attack %	--
Assists	--
Service Aces	--
Digs	--
Block Solos	--
Block Assists	--

2011 (True Freshman):

Redshirted.

High School:

A 2010 graduate of St. Francis High School in Sacramento, Calif. Two-time letterwinner for the Troubadors, Fontes also captained the squad for two years. Member of the Cal Synergy and Nor Cal Select Clubs. A libero and defensive specialist, Fontes helped lead St. Francis to the San Joaquin Section Title in 2009, a Delta League Championship and pull her team as high as third in the state in DII. Fontes earned Academic High Honors all four years at her high school as well as being an ambassador at SFHS. Lists her most exciting moment in sports as winning the section title in 2009.

Personal:

A marketing major, her full name is Katie Christine Fontes. Parents are Kevin and Christina Fontes of Rocklin, Calif. Father was a student-athlete at Sacramento State. Born Aug. 31, 1992 in Rocklin, Calif.



CAITLYN FRANCIS

5-10 • Libero • Jr.

LIBERO

ROSEVILLE, CALIF.

CALIFORNIA

14

Career HIGHS

Kills	--
Points	2, vs. California 10/21/11
TA	2, 3x, last vs. California 10/21/11
Assists	1, 6x, last vs. WSU 9/21/12
Service Aces	2, vs. California 10/21/11
Digs	13, vs. Washington State 9/23/11
Block Solos	--
Block Assists	--

2012 HIGHS

Kills	--
Points	1, vs. Wyoming 9/7/12
Attack %	--
Assists	1, 5x, last vs. WSU 9/21/12
Service Aces	1, vs. Wyoming 9/7/12
Digs	9, vs. Oregon 10/20/12
Block Solos	--
Block Assists	--

2011 (Sophomore):

Began career at ASU playing in 66 sets for the Devils. Recorded eight service aces for the devils, averaging 0.12 per set. Also contributed 112 digs, the sixth most on the squad. Season-high of 13 digs came on Sept. 25 against Washington. Was the only Sun Devil to earn First Team honors on the Pac-12 All-Academic Team.

2007 (Freshman at Cal):

Played in 77 sets as a freshman, helping the team with 153 digs and 18 service aces. Also contributed 17 assists and 19.0 points.

High School:

A 2007 graduate of Granite Bay High School in Granite Bay, Calif., was a three year letter winner for the Grizzly Bears as an outside hitter. Sacramento Bee Volleyball First Team all Metro 2005 & 2006, Press Tribune All-Area First Team 2005, Press Tribune All-Area Volleyball MVP 2006, Prep Volleyball 2007 Defensive Dandy, Second team. As a senior was first in California with 1,034 serves received, second with 688 kills, 10th with 120 service aces and 22nd with 495 digs. Also lettered in Track and Field. Starter on the 2004 U16 Force Volleyball club that placed second at the Junior Olympics. Member of the Delta Valley squad that placed third in the National Division in the U18 at the Junior Olympics.

Personal:

A double major in psychology and family and human development with a minor in spanish. Full name is Caitlyn Noelle Francis, recently married - her maiden name is Murphy. Parents are Thomas and Victoria Murphy of Roseville, Calif. Has two brothers, Thomas and Robert, and four sisters, Elizabeth, Jillian, Jennifer, and Madalyn. Born Aug. 23, 1988 in Roseville, Calif. Played soccer growing up, winning the U15 National USA Soccer Championship.

Trophy Case:

2011
First Team Pac-12 All-Academic

Year	SP	K	K/S	PCT	AST	AST/S	SA	SE	DIG	DIG/S	BS	BA	TOTAL	BLK/S	POINTS
2011	66	0	0.00	-0.125	1	0.02	8	17	112	1.70	0	0	0	0.00	8.0
2012	88	0	0.00	-0.200	6	0.07	1	0	118	1.34	0	0	0	0.00	1.0
Total	154	0	0.00	-0.154	7	0.05	9	17	230	1.49	0	0	0	0.00	9.0



MACEY GARDNER

6-0 • OH • Fr.

OH

GILBERT, ARIZ.

GILBERT HS

12

2012 HIGHS

Kills	28, at UC Irvine 8/31/12
Points	28.5, at UC Irvine 8/31/12
Attack %	.484, vs. Colgate 8/31/12
Assists	2, 4x, last at USC 10/7/12
Service Aces	2, 2x, last at Arizona 9/18/12
Digs	21, at USC 10/7/12
Block Solos	1, 2x, last vs. Gonzaga 9/15/12
Block Assists	4, 2x, last at LMU 9/1/12

2012 (Freshman):

Named to the All-Tournament Team at UTEP's El Paso Sports Commission Invitational after tallying 44 kills (3.67/set) and 25 digs over the weekend. Posted her first career double-double against Idaho State with 16 kills and 11 digs. Honored as All-Tournament of the UCI/LMU Dual Classic after tallying two double-doubles, a team-best 28 kills against UCI on Aug. 31, which ties for the ASU freshman single-match record and also ranks 17th all-time in the category. Picked up her third All-Tournament honor of the year at the Jayhawk Invitational after posting her fourth double-double of the year against Wyoming (24 kills, 18 digs) and a team-best 19 kills against Kansas and College of Charleston. Capped the tournament segment of the season being named MVP of ASU's Sheraton Invitational. After helping the Sun Devils to a 4-0 weekend at home, posting double-doubles against Florida Atlantic (13k, 10 digs) and Gonzaga (24k, 12 digs) she was named the Pac-12 Freshman of the Week on Sept. 17. Earned her second Freshman of the Week award on Oct. 1, after posting her seventh double-double of the year against No. 7 Stanford (27 kills, 13 digs) and tallying 20 kills for a .350 attack percentage against California.

High School:

A product of Gilbert High School, under head coach Joe Hesse, Gardner ranks 20th in the nation by PrepVolleyball.com Senior Aces and named to Volleyball Magazine's 2012 FAB-50. She led GHS to a 2011 A.I.A. Division I State Championship and is a two-time First Team All-State honoree while also being named the 2012 Arizona Republic and East Valley Tribune Player of the Year. Played for Club Red of Arizona for coach James Felton which took the bronze medal at the USA Volleyball Junior Olympics in the open division en route to her being named to the All-Tournament Team, an honor which she was twice awarded. Capped her senior year being named First Team Under Armour All-American, winning the Under Armour Hardest Hitter Award, ESPN Second Team All-American, and the A.I.A. Central Region Player of the Year (2011, 2009).

Personal:

A business law major, her full name is Macey Braquel Gardner. Parents are Troy and Holli Gardner. Has three brothers: Kyler, Brock and David Eisemeier; and one sister, Tatum. Father and mother both played basketball at Eastern Arizona, brother, David, plays basketball at Pace University in New York City and brother Kyler plays basketball at Northland International University in Wisconsin.

Trophy Case:

2012

Pac-12 Freshman of the Week | Sept. 17| Oct. 1

MVP ASU's Sheraton Invitational

All-Tournament Team UCI/LMU Dual Classic

All-Tournament Team UTEP's El Paso Sports Commission Invitational

All-Tournament Team KU's Jayhawk Invitational

Year	SP	K	K/S	PCT	AST	AST/S	SA	SE	DIG	DIG/S	BS	BA	TOTAL	BLK/S	POINTS
2012	95	447	4.71	.211	16	0.17	13	19	235	2.47	4	26	30	0.32	477.0
Total	95	447	4.71	.211	16	0.17	13	19	235	2.47	4	26	30	0.32	477.0



BETHANY JORGENSEN

5-11 • OH • Jr.

OH

TEMPE, ARIZ.

CORONA DEL SOL HS 17

Career HIGHS

Kills	2, 2x, last at California 10/1/11
Points	2.5, at Stanford 11/26/10
TA	8, at Stanford 11/26/10
Assists	2, 2x, last vs. WSU 9/21/12
Service Aces	2, at Arizona 11/22/11
Digs	8, vs. Seattle 9/3/10
Block Solos	--
Block Assists	1, 2x, last vs. Arizona 11/26/11

2012 HIGHS

Kills	--
Points	1, 4x, last vs. WSU 9/21/12
Attack %	--
Assists	2, vs. WSU 9/21/12
Service Aces	1, 4x, last vs. WSU 9/21/12
Digs	2, 2x, last vs. Oregon 10/20/12
Block Solos	--
Block Assists	--

2011 (Sophomore):

Appeared in 12 matches for 25 sets and two starts. Tallied two kills, three aces and 31 digs on the year. Her two kills came in conference play, against No. 4 California - her service aces were all against Arizona, two on Nov. 22 and one on Nov. 26. Had a season-best seven digs at Arizona while averaging 1.24 digs per set on the year.

2010 (Freshman):

Saw limited playing time in her first year with the Sun Devils. Played in 22 sets, contributing with 14 digs.

High School:

A 2010 graduate of Corona del Sol in Tempe, Ariz., she was a three-time letter winner in volleyball and also lettered in track & field for the Aztecs. Captained her high school team for two seasons. Some of her accolades include being named First Team All-State in 2009, Second-Team All-State in 2008 and First Team All-Central Region 2007-2009. Jorgensen was a member of National Honors Society and the Corona del Sol Student Council while also honored with an AIA Scholar Athlete Award. Lists winning the International Youth High Performance Championship in 2009 as her most exciting moment in sports. Bethany was also a member of the Club Red Volleyball Club and participated in the Junior Olympics from 2005-2010.

Personal:

A health science (pre-professional) major, her full name is Bethany Ann Jorgensen. Parents are Dan and Sharon Jorgensen of Tempe, Ariz. Has one younger brother, Kyle. Born in Tempe, Ariz.

Year	SP	K	K/S	PCT	AST	AST/S	SA	SE	DIG	DIG/S	BS	BA	TOTAL	BLK/S	POINTS
2010	22	3	0.14	0.182	0	0.00	2	7	14	0.64	0	1	1	0.05	5.5
2011	25	2	0.08	-0.083	2	0.08	3	17	31	1.24	0	1	1	0.04	5.5
2012	44	0	0.00	0.000	3	0.07	4	4	8	0.18	0	0	0	0.00	4.0
Total	91	5	0.05	0.038	5	0.05	9	28	53	0.58	0	2	2	0.02	15.0



JULIA KATOLIK

6-4 • MB • So.

MB

ATHENS, GREECE

THIRD HS OF NEW PHILADELPHIA 18

2012 HIGHS

Kills	--
Points	--
Attack %	--
Assists	--
Service Aces	--
Digs	--
Block Solos	--
Block Assists	--

2011 (Freshman):

Redshirt freshman. Named to the 2011 Dean's List.

High School:

played for Third High School in Athens, Greece under head coach Ioulia Mitsi. Played for the Panellinios club team based out of Athens for coach Nikos Mpoutsoris.

Personal:

A family and human development major with a minor in sociology, her full name is Julia Aleksquadra Katolik. Parents are Piotr and Magdalena Katolik of Athens, Greece. Has one brother, Adam. Born Aug. 22, 1991 in Poland.

Trophy Case:
2011
Dean's List



SHANNAN MCCREADY

5-7 • Setter • So.

SETTER

AIEA, HAWAII

PUNAHOU SCHOOL **7**

Career HIGHS

Kills	2, 3x, last vs. Colorado 11/11/11
Points	4/5, vs. Oregon State 11/5/11
TA	3, 3x, last at North Carolina 9/10/11
Assists	56, vs. Utah 11/12/11
Service Aces	3, at Washington 10/28/11
Digs	14, vs. Utah 11/12/11
Block Solos	1, vs. Colorado 11/11/11
Block Assists	3, 3x, last at Colorado 10/15/11

2012 HIGHS

Kills	1, at UCLA 10/5/12
Points	2.5, vs. Stanford 9/30/12
Attack %	--
Assists	29, vs. Stanford 9/30/12
Service Aces	2, vs. Stanford 9/30/12
Digs	4, vs. Stanford 9/30/12
Block Solos	--
Block Assists	1, vs. Stanford 9/30/12

2011 (Freshman):

Began starting halfway through season and proved to be leading setter for the ASU squad. Recorded 689 assists on the year, highest on the team. Finished fifth overall in the Pac-12 for assists per set with a 10.77 average. Also recorded 12 service aces for the Devils, tied for fourth-best overall. Season-high assists came versus Utah on Nov. 12, where she recorded 56 assists over five sets.

High School:

A 2011 graduate of Punahou High School in Honolulu, Hawaii. Four-time letter winner for the Buff n' Blue. Was a two-time league champion and three-time state champion runner-up. Awarded Most Inspirational Player and Punahou Scholar Athlete award. Team captain on both high school and club teams. Member of Asics Rainbows, leading them to the 14 & under National Championship in Junior Olympics. Also plays soccer in the off-season and is on the Leahi Soccer Club.

Personal:

An early childhood education major, her full name is Shannan Jean Pomaikai McCready. Parents are John and Lorrie McCready of Aiea, Hawaii. She has three older brothers: Tyler, Spencer, and Parker. Born Feb. 9, 1993 in Honolulu, Hawaii.

Year	SP	K	K/S	PCT	AST	AST/S	SA	SE	DIG	DIG/S	BS	BA	TOTAL	BLK/S	POINTS
2011	64	9	0.14	0.172	689	10.77	12	23	132	2.06	1	22	23	0.36	33.0
2012	7	1	0.14	0.250	55	7.86	2	1	6	0.86	0	1	1	0.14	3.5
Total	71	10	0.14	0.182	744	10.48	14	24	138	1.94	1	23	24	0.34	36.5



ALLISON PALMER

5-9 • Setter • Fr.

SETTER

LAGUNA, CALIF.

LAGUNA BEACH HS 23

2012 HIGHS

Kills	3, vs. Idaho State 8/24/12
Points	5, at California 10/28/12
Attack %	--
Assists	59, at UC Irvine 8/31/12
Service Aces	3, at LMU 9/1/12
Digs	17, 2x, last vs. Gonzaga 9/15/12
Block Solos	1, vs. FAU 9/15/12
Block Assists	6, at California 10/28/12

2012 (Freshman):

Posted her first career double-double against Idaho State with 50 assists and 13 digs.

High School:

Listed as a Top-50 recruit nationally by PrepVolleyball.com, Palmer hails from Laguna Beach High School where she played for head coach Lance Stewart. She led the team to the Orange Coast League Championship in 2009 and 2010, picking up All-League First Team honors in consecutive years. During her high school campaign she has also earned All-League Second-Team (2008) and was selected to the All-CIF Southern Section Division IA (2010). Played for club team Laguna Beach VBC out of California for coach Michael Soylular.

Personal:

Majoring in accountancy. Daughter of Sylvain and Rosemary Palmer, her full name is Allison Margaret Palmer. Has one brother, Andrew, and one sister Alexandra. Brother played golf at Cornell and sister played volleyball at Minnesota.

Year	SP	K	K/S	PCT	AST	AST/S	SA	SE	DIG	DIG/S	BS	BA	TOTAL	BLK/S	POINTS
2012	92	11	0.12	.355	1052	11.43	16	23	207	2.25	1	30	31	0.34	43.0
Total	92	11	0.12	.355	1052	11.43	16	23	207	2.25	1	30	31	0.34	43.0



ALEXIS PINSON

6-2 • MB • Jr.

MB

PHOENIX, ARIZ.

XAVIER COLLEGE PREP **5**

Career HIGHS

Kills	12, vs. Idaho State 8/24/12
Points	16.5, at Oregon State 9/16/11
Attack %	.889, vs. Oregon 11/6/10
Assists	1, 7x, last vs. FAU 9/15/12
Service Aces	3, vs. Seattle 9/3/10
Digs	5, at UC Irvine 8/31/12
Block Solos	2, vs. FAU 9/15/12
Block Assists	11, at Oregon State 9/16/11

2012 HIGHS

Kills	12, vs. Idaho State 8/24/12
Points	16, vs. Idaho State 8/24/12
Attack %	.750, vs. Villanova 9/14/12
Assists	1, 5x, last vs. FAU 9/15/12
Service Aces	2, at UCLA 10/5/12
Digs	5, at UC Irvine 8/31/12
Block Solos	2, vs. FAU 9/15/12
Block Assists	10, at LMU 9/1/12

2012 (Junior):

Starting the season off strong by leading the Sun Devils defensively with 63 total blocks (5 bs/58 ba) before the start of Pac-12 action. Named to ASU's Sheraton Invitational after recording 29 kills and averaging 1.43 blocks/set in ASU's 4-0 weekend. Before conference action, Pinson has already broken her career single-match high in block solos (two against FAU), digs (5 at UCI) and kills (12 vs. Idaho State). Heading into conference action her 10 block assists at LMU ranks fourth in conference.

2011 (Sophomore):

Had second-best block per set average with 1.02, recording 52 total blocks on three solo and 49 assists. Tied career-best of 11 kills on Sept. 16 against Oregon State, where she also had her career-best 11 block assists, which ties for the second-best block assists in program history. Hit third-best hitting percentage on the team with .243, on 72 kills from the year. Was given Honorable Mention accolades on the Pac-12 All-Academic Team.

2010 (Freshman):

Continued to improve throughout the season, posting 59 kills and 33 blocks. Had a huge effort Oct. 31 vs. UC Riverside, tallying 11 kills to help the Sun Devils complete the sweep.

2009 (Freshman-Redshirt):

A walk-on, Pinson saw limited time on the floor during the season, but improved vastly both throughout the season and in the off-season to look to vie for time at middle blocker in the 2010 season.

High School:

A 2009 graduate of Xavier College Preparatory in Phoenix, Ariz where she earned two varsity volleyball letters. In 2007, Alexis was named PrepVolleyball.com Most Improved 3rd Team, Xavier Most Improved Player, All Region Honorable Mention, All State Honorable Mention as well as being a member of the Desert Valley Region Champions and 5A-1 State Champion squads. 2008 saw Pinson named AZ United Dairyman's 1st team All-American, All Region 1st team, All State Honorable Mention, Westwood Tournament All-Tournament team, Team Captain and Xavier Outstanding Senior Athlete as well as being a member of the Westwood Tournament Champion, Goldwater Invitational Champion, Desert Valley Region Champion and 5A-1 State Champion teams. In addition to playing for Xavier, Pinson also was a member of the Arizona Volleyball Academy.

Personal:

A business communications major focused in communications, her full name is Alexis Noele Pinson. Parents are Ernie and Denise Pinson of Phoenix, Ariz. Born December 5, 1990 in Phoenix, Ariz.

Trophy Case:

2012
All-Tournament Team ASU's Sheraton Invitational

Year	SP	K	K/S	PCT	AST	AST/S	SA	SE	DIG	DIG/S	BS	BA	TOTAL	BLK/S	POINTS
2010	38	59	1.55	0.382	2	0.05	3	3	4	0.11	1	32	33	0.87	79.0
2011	51	72	1.41	0.243	0	0.00	0	0	8	0.16	3	49	52	1.02	99.5
2012	95	156	1.64	0.312	8	0.08	5	17	29	0.31	7	83	90	0.95	209.5
Total	184	287	1.56	0.297	10	0.05	8	20	41	0.22	11	164	175	0.95	388.0



STEPHANIE PREACH

5-8 • Libero • Jr.

LIBERO

PHOENIX, ARIZ.

XAVIER COLLEGE PREP 

Career HIGHS

Kills	4, vs. San Deigo State 9/3/10
Points	6.5, vs. Seattle 9/3/10
TA	7, 2x, last vs. San Diego State 9/3/10
Assists	45, vs. Seattle 9/3/10
Service Aces	3, vs. UC Riverside 9/11/10
Digs	43, vs. USC 10/8/11
Block Solos	2, vs. Seattle 9/3/10
Block Assists	1, 3x, last vs. UCLA 11/12/10

2012 HIGHS

Kills	1, 3x, last at Stanford 10/26/12
Points	2, 3x, last vs. UC Riverside 9/14/12
Attack %	--
Assists	9, at UC Irvine 8/31/12
Service Aces	2, 2x, last vs. UCR 9/14/12
Digs	30, at USC 10/7/12
Block Solos	--
Block Assists	--

2012 (Junior):

Named to the All-Tournament team at UTEP's El Paso Sports Commission Invitational after compiling 54 digs, seven assists and two service aces. Preach was named to an all tournament team for consecutive weeks, this time for the UCI/LMU Dual Classic. The junior posted 27 assists and 118 digs (4.92/set) over the weekend, including a then season-best 27 digs at Loyola Marymount. Closed out the tournament portion of the schedule being named to ASU's Sheraton Invitational All-Tournament Team after tallying 62 digs and 11 assists during ASU's 4-0 weekend.

2011 (Sophomore):

One of two Devils to play in all 116 sets for the Devils, starting all 31 matches as libero. Had 610 digs on the season with a 5.26 average, best on the team and first overall in the Pac-12, finishing 32nd nationally. Also recorded 24 service aces, first overall on the squad. Notched 53 assists, third most for ASU. Season-best of two service aces occurred in six matches. Most digs came against USC on Oct. 8 with 43, which is tied for fourth best in program history. Received Pac-12 Defensive Player of the Week honors for the week of Nov. 14, the 15th Player of the Week for ASU all-time and first since Sept. 30, 2002. Was named to Pac-12 All-Academic Honorable Mention team.

2010 (Freshman):

Had a major impact her freshman year playing in 101 sets. Finished second on the team in with 117 assists and 317 digs. Also posted 14 service aces.

High School:

A 2010 graduate of Xavier College Preparatory in Phoenix, Ariz., where she was a four-time letterwinner in volleyball. Preach also captained the Gator squad for two seasons. Awards include Gatorade Player of the Year in 2008-2009 and 2009-2010, All-Arizona Team in 2007-09, First Team All-State 2007-2009 and Under Armour All-American. Was a member of the Arizona Volleyball Academy. Preach was a member of National Honors Society and was honored with a Scholar-Athlete Award. Lists winning state as her most exciting moment in sports. Played club ball for Arizona Volleyball Academy.

Personal:

A communication major with a minor in psychology, her full name is Stephanie Michelle Preach. Parents are Brett and Debra Preach of Phoenix, Ariz. RJ Preach played for ASU baseball from 2006-08, and sister Kristen plays volleyball for Grand Canyon. Is the youngest of four, with three sisters: Lindsay, Kristen and Lacey. Born Aug. 26, 1991 in Phoenix, Ariz.

Trophy Case:

2012

All-Tournament Team ASU's Sheraton Invitational

All-Tournament Team UCI/LMU Dual Classic

All-Tournament Team UTEP's El Paso Sports Commission Invitational


2011

Pac-12 All-Academic Honorable Mention

Pac-12 Defensive Player of the Week | Nov. 14

Year	SP	K	K/S	PCT	AST	AST/S	SA	SE	DIG	DIG/S	BS	BA	TOTAL	BLK/S	POINTS
2010	101	10	0.10	0.267	117	1.16	14	39	231	0.25	2	3	5	0.05	27.5
2011	116	2	0.02	0.000	53	0.46	24	46	610	5.26	0	0	0	0.00	26.0
2012	95	3	0.03	0.600	80	0.84	10	10	436	4.59	0	0	0	0.00	13.0
Total	312	15	0.05	0.193	250	0.80	48	95	1277	4.09	2	3	5	0.02	66.5



JENNY TESLEVICH
 5-9 • Libero • Jr.
 LIBERO
 PHOENIX, ARIZ.
 XAVIER COLLEGE PREP 

Career HIGHS	
Kills	1, 2x, last vs. High Point 9/10/10
Points	2, 3x, last vs. Utah 11/12/11
TA	1, 3x, last vs. Utah Valley State 9/10/10
Assists	3, at UTEP 8/25/12
Service Aces	2, 3x, last vs. Utah 11/12/11
Digs	22, at UC Irvine 8/31/12
Block Solos	--
Block Assists	--

2012 HIGHS	
Kills	--
Points	1, 2x, last at UTEP 8/25/12
Attack %	--
Assists	3, at UTEP 8/25/12
Service Aces	1, 2x, last at UTEP 8/25/12
Digs	22, at UC Irvine 8/31/12
Block Solos	--
Block Assists	--

2011 (Sophomore):

Became consistent player in conference play, participating in 54 sets on the season. Registered 120 digs, the fifth most on the squad. Also notched 8 service aces. Season-high number of digs was 16 on Oct. 28 at Washington.

2010 (Freshman):

As a freshman contributed right out of the gate, playing in 114 sets. Was fifth on the team with 209 digs, also producing 11 service aces.

High School:

A 2010 graduate of Xavier College Preparatory in Phoenix, Ariz., where she was a two-year letterwinner for the Gators. Captained the team her senior season. Also a member of the AZ Storm Club team. Awards include best Defensive Player 2008 & 2009, All-Region 2008 & 2009, All-State 2009. Member of the State Championship teams of 2008 & 2009. Also excelled in academics, a member of the National Honor Society. Lists winning Festival and blocking a ball as her most exciting moments in sports.

Personal:

A kinesiology major, her full name is Jennifer Lynn Teslevich. Parents are Greg and Ann Teslevich of Phoenix, Ariz. Is the youngest of five with two brothers Michael and Jon and two sisters, Sarah and Chrissy. Sister Sarah was an athlete at Irvine and Phoenix College. Born Aug. 30, 1992 in Phoenix, Ariz.

Year	SP	K	K/S	PCT	AST	AST/S	SA	SE	DIG	DIG/S	BS	BA	TOTAL	BLK/S	POINTS
2010	114	2	0.02	0.333	10	0.09	11	13	209	1.83	0	0	0	0	13.0
2011	54	0	0.00	0.000	6	0.11	8	8	120	2.22	0	0	0	0	8.0
2012	75	0	0.00	0.000	5	0.07	2	4	149	1.99	0	0	0	0	2.0
Total	243	2	0.01	0.333	21	0.09	21	25	478	1.97	0	0	0	0	23.0



NORA TUIOTI-MARINER

6-1 • OH • So.

OH

CORONA, CALIF.

CORONA HS



Career HIGHS

Kills	19, vs. Utah 11/12/11
Points	21, vs. Washington State 9/23/11
Attack %	.552, vs. Ga. Southern 9/9/11
Assists	3, 2x, last at California 10/1/11
Service Aces	4, vs. Villanova 9/14/12
Digs	18, at California 10/28/12
Block Solos	2, vs. Washington State 9/23/11
Block Assists	11, at Oregon State 9/16/11

2012 HIGHS

Kills	15, vs. Wyoming 9/7/12
Points	16, vs. Wyoming 9/7/12
Attack %	.333, 2x, last at Stanford 10/26/12
Assists	2, 2x, last at USC 10/7/12
Service Aces	4, vs. Villanova 9/14/12
Digs	18, at California 10/28/12
Block Solos	1, 2x, last at California 10/28/12
Block Assists	6, at Kansas 9/7/12

2011 (Freshman):

Had an outstanding freshman season, becoming a consistent starter. Threw down for 259 kills on a 2.51 kill per set average, the third most on the team. Also recorded 83 blocks, including a season-high of eleven assists against Oregon State on Sept. 16, which broke the ASU record for block assists in a match by a freshman. Contributed 16 service aces and 233 digs. Had seven double-doubles throughout the year. Season-high of 19 kills came on Nov. 12 against Utah. Had three service-aces on Sept. 2 against Iowa State. Named Freshman of the Week for the week of Nov. 14, the first Freshman of the Week for ASU since the Pac-12 was formed. Was named to the Pac-12 All-Freshman Team Honorable Mention.

High School:

A 2011 graduate of Corona High School in Corona Calif., where she was a three-year letterwinner for the panthers. Played middle blocker and outside hitter positions. Named 2009, 2010 All-League Team and honorable mention in 2008. Led the panthers to the League Championship in 2008. Member of Laguna Beach Volleyball Club. All-America Team in 2010 at the Junior Olympics and a Bronze medalist in 2010.

Personal:

Full name is Nora Sharma Tuioti-Mariner. Parents are Max and Josie Tuioti-Mariner of Corona, Calif. Has six siblings: Latfu, Christie, Max, Celeste, Jacob, and Sarah. Born Feb. 19, 1993 in Fountain Valley, Calif.

Trophy Case:

2011

Pac-12 All-Freshman Team Honorable Mention

Pac-12 Freshman of the Week | Nov. 14

Year	SP	K	K/S	PCT	AST	AST/S	SA	SE	DIG	DIG/S	BS	BA	TOTAL	BLK/S	POINTS
2011	103	259	2.51	0.140	16	0.16	16	13	233	2.26	6	77	83	0.81	319.5
2012	92	158	1.72	0.173	11	0.12	15	19	136	1.48	4	63	67	0.73	208.5
Total	195	417	2.14	0.152	27	0.14	31	32	369	1.89	10	140	150	0.77	528.0



ERICA WILSON

6-0 • MB • Sr.

MB

OCEANSIDE, CALIF.

FALLBROOK HS

10

Career HIGHS

Kills	24, at UTEP 8/25/12
Points	26, at UTEP 8/25/12
Attack %	.714, at UCLA 11/20/11
Assists	2, 2x, last at California 10/28
Service Aces	5, 2x, last vs. Fresno State 8/25/12
Digs	6, 4x, last vs. Utah 11/12/11
Block Solos	3, at Oregon 10/8/10
Block Assists	9, vs. Cincinnati 8/29/09

2012 HIGHS

Kills	24, at UTEP 8/25/12
Points	26, at UTEP 8/25/12
Attack %	.458, vs. Fresno State 8/25/12
Assists	2, at California 10/28/12
Service Aces	5, 2x, last vs. Fresno State 8/25/12
Digs	5, 2x, last at USC 10/7/12
Block Solos	2, at UC Irvine 8/31/12
Block Assists	5, vs. COC 9/8/12

2012 (Senior):

Named the MVP of UTEP's El Paso Sports Commission Invitational after posting 55 kills over the weekend and 11 service aces. While leading the Pac-12 in aces and points, Wilson was named to her second All-Tournament Team, this time at the Jayhawk Invitational. The senior swung for 19 kills against tournament-host Kansas and finished the weekend with 15 kills against College of Charleston.

2011 (Junior):

Continued to be an important component on the team, starting all 31 sets. Led the team in blocks for the second consecutive year with 85 total on five solo and 80 assists. Had a .325 hitting percentage on the season, which was tenth in the Pac-12 conference and 107th nationally. Season high of 15 kills on Oct. 15 at Colorado. Had six block assists in two games on the year, first on Aug. 27 against San Jose State then on Sept. 16 in the Pac-12 opener at Oregon State. Was named to the 2011 COBRA Magazine All-Southwest Region Team Honorable Mention.

2010 (Sophomore):

Had a profound impact in her second year with the Sun Devils, starting every game. Led the team with 120 blocks and 27 service aces, was second with 335.5 points, and third with 244 kills. Posted a breakout performance Sep. 11 against UC Riverside, tallying nine kills for an average of .583. Also posted nine blocks Sep. 17 against Michigan and eight blocks Oct. 8 vs. Oregon.

2009 (Freshman):

Came out to immediately help impact the Sun Devils, helping to lead the ASU D to a third place rank in the Pac-10 in blocks per set and 13th in the NCAA. Was fifth on the team in blocks with 59 for a 0.94 blocks per set average. Collected 84 kills for a 1.33 kills per set average.

High School:

A 2009 graduate of Fallbrook High School in Fallbrook, Calif. While a letterwinner in volleyball, Wilson also captained the Fallbrook Warriors. A member of the Coast Volleyball Club as well.

Personal:

A communications major, her full name is Erica Martrece Wilson. Parents are Eric and Angela Wilson of Oceanside, Calif. Has one younger brother and an older sister. Born May 26, 1991 in Akron, Ohio.

Trophy Case:

2012

MVP of UTEP's El Paso Sports Commission Invitational

All-Tournament Team KU's Jayhawk Invitational

2011

COBRA Magazine All-Southwest Region Team Honorable Mention

Year	SP	K	K/S	PCT	AST	AST/S	SA	SE	DIG	DIG/S	BS	BA	TOTAL	BLK/S	POINTS
2009	63	84	1.33	0.174	3	0.05	0	0	18	0.29	5	54	59	0.94	116.0
2010	124	244	1.97	0.318	8	0.06	27	55	53	0.43	9	111	120	0.97	335.5
2011	116	275	2.37	0.325	10	0.09	21	40	80	0.69	5	80	85	0.73	341.0
2012	95	403	4.24	0.197	5	0.05	30	41	51	0.54	8	41	49	0.52	461.5
Total	398	1006	2.53	0.252	26	0.07	78	136	202	0.51	27	286	313	0.79	1254

28

Match 1

Volleyball Box Score 2012 Arizona State Volleyball Arizona State vs Idaho State (Aug 24, 2012 at El Paso, Texas)

##	Arizona State	ATTACK					SET			SERVE			RECEIVE			BLOCK			Points			
		S	K	E	TA	Pct	Ast	TA	Pct	SA	SE	TA	Pct	O	RE	Pct	Dig	BS		BA	BE	BHE
1	Tuioti-Mariner, Nora	5	8	4	29	.138	2	5	.400	1	1	10	.900	14	1	.933	11	0	4	0	0	11.0
5	Pinson, Alexis	5	12	2	20	.500	1	3	.333	0	1	8	.875	1	0	1000	2	0	8	0	0	16.0
8	Follette, Whitney	5	7	2	14	.357	2	3	.667	1	2	14	.857	0	0	.000	2	0	4	0	1	10.0
10	Wilson, Erica	5	18	10	47	.170	0	2	.000	5	2	25	.920	0	0	.000	1	0	3	0	0	24.5
12	Gardner, Macey	5	16	12	70	.057	2	8	.250	0	2	11	.818	32	3	.914	11	0	4	0	0	18.0
23	Palmer, Allison	5	3	0	6	.500	50	141	.355	1	0	15	1000	0	0	.000	13	0	1	0	1	4.5
4	Teslevich, Jenny	5	0	0	0	.000	0	1	.000	0	0	5	1000	17	1	.944	8	0	0	0	0	0.0
6	Preach, Stephanie	5	0	0	0	.000	2	15	.133	0	0	21	1000	23	1	.958	26	0	0	0	0	0.0
14	Francis, Caitlyn	4	0	0	0	.000	1	2	.500	0	0	0	.000	5	1	.833	0	0	0	0	0	0.0
Totals		5	64	30	186	.183	60	180	.333	8	8	109	.927	92	7	.929	74	0	24	0	2	84.0

Team Attack By Set

Set	K	E	TA	Pct	Sideout	Pct
1	14	9	39	.128	11-24	45%
2	13	4	37	.243	12-19	63%
3	14	3	35	.314	15-24	62%
4	18	12	53	.113	18-27	66%
5	5	2	22	.136	9-14	64%
Totals				65-108	60%	

SET SCORES

Arizona State (3)	1	2	3	4	5	Team Records:
Idaho State (2)	20	25	22	29	16	1-0
	25	17	25	27	14	0-1

TOTAL TEAM BLOCKS: 12.0

##	Idaho State	ATTACK					SET			SERVE			RECEIVE			BLOCK			Points			
		S	K	E	TA	Pct	Ast	TA	Pct	SA	SE	TA	Pct	O	RE	Pct	Dig	BS		BA	BE	BHE
3	BARTSCHI, Whitney	5	2	1	14	.071	0	1	.000	0	0	0	.000	0	0	.000	0	2	7	1	0	7.5
5	HONE, Jaclyn	5	12	5	29	.241	3	7	.429	0	1	14	.929	32	3	.914	15	0	6	0	0	15.0
6	LYMAN, Tressa	5	17	12	53	.094	2	10	.200	0	1	15	.933	21	1	.955	14	0	2	0	2	18.0
8	NAUT, Kimberly	5	4	3	12	.083	0	2	.000	0	4	10	.600	0	0	.000	0	0	6	1	0	7.0
10	VAN EVERY, Breanne	5	17	6	59	.186	3	6	.500	1	0	21	1000	20	0	1000	16	0	3	0	0	19.5
14	MENDENHALL, Lori	5	8	0	10	.800	43	131	.328	3	0	24	1000	0	0	.000	14	1	2	2	0	13.0
1	SEARLE, Kylee	5	0	0	0	.000	3	15	.200	2	2	15	.867	20	4	.833	21	0	0	0	0	2.0
7	DOWNS, Danielle	2	0	0	0	.000	0	0	.000	1	1	9	.889	0	0	.000	1	0	0	0	0	1.0
Totals		5	60	27	177	.186	54	172	.314	7	9	108	.917	93	8	.921	81	3	26	4	2	83.0

Team Attack By Set

Set	K	E	TA	Pct	Sideout	Pct
1	12	2	31	.323	12-21	57%
2	9	9	36	.000	10-22	45%
3	20	3	37	.459	16-22	72%
4	10	9	52	.019	17-28	60%
5	9	4	21	.238	9-16	56%
Totals				64-109	58%	

SET SCORES

Arizona State (3)	1	2	3	4	5	Total
Idaho State (2)	6	0	6	18	4	34
	4	0	3	3	3	13

TOTAL TEAM BLOCKS: 16.0

Site: El Paso, Texas (Memorial Gym)
Date: Aug 24, 2012 Attend: 212 Time: 2:00
Referees: Ron Pelham, Rob Torres

Tie scores 6 0 6 18 4 34
Lead change 4 0 3 3 3 13

Match 2

Volleyball Box Score 2012 Arizona State Volleyball Arizona State vs Fresno State (Aug 25, 2012 at El Paso, Texas)

##	Arizona State	ATTACK					SET			SERVE			RECEIVE			BLOCK			Points			
		S	K	E	TA	Pct	Ast	TA	Pct	SA	SE	TA	Pct	O	RE	Pct	Dig	BS		BA	BE	BHE
4	Teslevich, Jenny	3	0	0	0	.000	0	1	.000	1	0	7	1000	8	0	1000	3	0	0	0	0	1.0
5	Pinson, Alexis	3	2	0	9	.222	1	2	.500	0	0	0	.000	1	0	1000	2	0	5	0	0	4.5
8	Follette, Whitney	3	7	3	14	.286	0	1	.000	1	1	12	.917	1	0	1000	2	0	2	1	0	9.0
10	Wilson, Erica	3	13	2	24	.458	1	1	1000	5	2	17	.882	0	0	.000	1	0	2	0	0	19.0
12	Gardner, Macey	3	14	4	34	.294	1	3	.333	1	0	15	1000	23	1	.958	5	0	1	0	0	15.5
23	Palmer, Allison	3	2	0	2	1.000	33	76	.434	0	3	10	.700	0	0	.000	5	0	1	1	0	2.5
1	Tuioti-Mariner, Nora	3	2	2	11	.000	1	1	1000	0	0	0	.000	5	0	1000	0	0	5	0	0	4.5
6	Preach, Stephanie	3	0	0	0	.000	3	11	.273	0	0	13	1000	8	0	1000	12	0	0	0	0	0.0
14	Francis, Caitlyn	3	0	0	0	.000	0	0	.000	0	0	0	.000	5	0	1000	2	0	0	0	0	0.0
Totals		3	40	11	94	.309	40	96	.417	8	6	74	.919	51	1	.981	32	0	16	2	0	56.0

Team Attack By Set

Set	K	E	TA	Pct	Sideout	Pct
1	17	6	44	.250	12-23	52%
2	11	2	15	.600	9-11	81%
3	12	3	35	.257	13-20	64%
Totals				34-54	62%	

SET SCORES

Arizona State (3)	1	2	3	Team Records:
Fresno State (0)	25	25	20	2-0
	22	11	19	1-1

TOTAL TEAM BLOCKS: 8.0

##	Fresno State	ATTACK					SET			SERVE			RECEIVE			BLOCK			Points			
		S	K	E	TA	Pct	Ast	TA	Pct	SA	SE	TA	Pct	O	RE	Pct	Dig	BS		BA	BE	BHE
1	WILD, KORRIN	3	8	11	27	.111	0	0	.000	0	0	4	1000	20	1	.952	7	0	2	0	0	9.0
2	ALCANTARA, Barbara	3	3	0	4	.750	29	83	.349	0	0	9	1000	1	0	1000	2	1	0	0	0	4.0
3	CALLAHAN, Megan	3	3	3	7	.000	0	1	.000	0	0	0	.000	0	0	.000	0	0	0	0	0	3.5
12	PEARSON, Molly	2	2	1	3	.333	0	0	.000	0	0	0	.000	0	0	.000	1	0	3	0	0	3.5
16	MURDOCK, Maci	3	4	4	11	.000	0	0	.000	0	1	7	.857	1	0	1000	3	2	0	0	0	5.0
22	BRAND, Marissa	3	11	5	36	.167	0	2	.000	0	0	10	1000	7	0	1000	9	0	2	0	0	12.0
4	ALBERTSON, Lauren	2	1	0	3	.333	0	0	.000	0	0	0	.000	0	0	.000	0	0	0	0	0	1.0
5	LEE, Christina	3	0	0	0	.000	2	9	.222	0	0	8	1000	9	4	.692	10	0	0	0	0	0.0
6	SCIACCA, Kristen	3	0	0	2	.000	0	0	.000	0	0	0	.000	1	0	1000	0	0	0	0	0	0.0
8	PEARSON, Katie	1	0	0	0	.000	0	1	.000	0	0	0	.000	0	0	.000	0	0	0	0	0	0.0
9	MORROW, Jaimee-Lee	2	1	1	2	.000	0	0	.000	0	1	2	.500	2	0	1000	0	0	0	0	0	1.0
10	AGRAZ, Cecilia	1	0	0	0	.000	0	0	.000	0	0	0	.000	0	0	.000	0	0	0	0	0	0.0
18	BOWENS, Zana	3	0	0	1	.000	2	3	.667	1	0	14	1000	19	3	.864	4	0	0	0	0	1.0
Totals		3	33	25	96	.083	33	99	.333	1	2	54	.963	60	8	.882	36	1	10	0	0	40.0

Team Attack By Set

Set	K	E	TA	Pct	Sideout	Pct
1	12	6	36	.167	12-25	47%
2	7	9	23	.087	9-25	36%
3	14	10	37	.108	12-24	50%
Totals				33-74	44%	

SET SCORES

Match 5

Volleyball Box Score 2012 UC Irvine Women's Volleyball Arizona State vs Colgate (Aug 31, 2012 at Irvine, CA)

#	Arizona State	ATTACK				SET			SERVE			RECEIVE			BLOCK			Points				
		S	K	E	TA	Pct	Asst	TA	Pct	SA	SE	TA	Pct	0	RE	Pct	Dig		BS	BA	BE	BHE
4	Teslevich, Jenny	3	0	0	0	.000	0	1	0	0	0	.000	0	0	0	0	0	0	0	0	0	0.0
5	Pinson, Alexis	3	7	3	16	.250	0	1	0	0	0	.000	0	0	0	0	0	0	0	0	0	8.0
10	Wilson, Erica	3	14	6	33	.242	0	1	0	0	0	.000	2	1	10	.900	0	0	0	0	0	17.5
12	Gardner, Macey	3	18	3	31	.484	0	4	0	0	0	.000	14	0	14	.929	14	0	0	0	0	18.5
23	Palmer, Allison	3	1	0	3	.333	40	78	513	0	0	0	1000	0	0	0	0	0	0	0	0	1.0
24	Binns, Mercedes	3	7	3	13	.308	0	1	0	0	0	.000	0	0	0	0	0	0	0	0	0	8.5
1	Tuioti-Mariner, Nora	3	4	0	7	.571	0	3	0	0	0	.000	1	2	19	.895	1	0	0	0	0	5.5
6	Preach, Stephanie	3	0	0	0	.000	5	12	417	1	1	15	.933	5	0	1000	18	0	0	0	0	1.0
14	Francis, Caitlyn	3	0	0	0	.000	0	0	0	0	0	.000	9	2	818	8	0	0	0	0	0	0.0
17	Jorgensen, Bethany	2	0	0	0	.000	0	0	0	0	0	.000	0	0	3	1000	0	0	0	0	0	0.0
Totals		3	51	15	103	.350	45	100	450	5	6	73	.918	38	2	950	50	1	6	0	0	60.0

Team Attack By Set

Set	K	E	TA	Pct
1	15	8	37	.189
2	17	4	29	.448
3	19	3	37	.432

SET SCORES

Team	1	2	3	Team Records:
Arizona State (3)	25	25	25	5-0
Colgate (0)	18	18	9	0-5

#	Colgate	ATTACK				SET			SERVE			RECEIVE			BLOCK			Points				
		S	K	E	TA	Pct	Asst	TA	Pct	SA	SE	TA	Pct	0	RE	Pct	Dig		BS	BA	BE	BHE
7	Fifer, Kaylee	3	1	0	2	.500	8	39	205	0	0	8	1000	0	0	0	0	0	0	0	0	1.0
8	Reilly, Kate	3	1	0	4	.250	0	1	0	0	0	.000	0	0	0	0	0	0	0	0	0	3.0
9	Karnes, Liz	3	1	1	8	.000	0	0	0	0	0	.000	0	0	0	0	0	0	0	0	0	2.5
12	Seely, Diane	3	3	2	12	.083	0	0	0	0	0	.000	1	1	9	.889	0	0	0	0	0	6.0
14	McCarthy, Michelle	3	6	4	21	.095	0	0	0	0	0	.000	13	1	929	11	0	1	1	0	0	6.5
22	Young, Lindsay	3	5	1	20	.200	1	3	333	0	0	6	1000	20	2	909	3	0	0	0	0	5.0
1	Finger, Lexi	3	0	0	0	.000	0	0	0	0	0	.000	2	8	750	10	1	909	3	0	0	0.0
2	Cremin, Caitlin	3	0	0	0	.000	1	8	125	0	1	5	.800	15	1	938	8	0	0	0	0	0.0
3	Donnelly, Hannah	3	0	0	0	.000	0	0	0	0	0	.000	0	1	1	000	0	0	0	0	0	0.0
5	Faines, Mari	3	3	2	9	.111	0	1	000	0	0	0	.000	0	0	0	0	0	0	0	0	4.0
6	Shurpyt-Knoop, Brook	2	0	1	6	-.167	0	0	0	0	0	.000	0	1	1000	3	0	0	0	0	0	0.0
10	Macy, Jackie	3	0	0	0	.000	7	36	194	1	2	8	750	0	0	0	0	0	0	0	0	1.0
11	Dyer, Allie	3	0	0	0	.000	0	0	0	0	0	.000	0	0	0	0	0	0	0	0	0	0.0
13	Hume, Kenzie	1	0	0	3	.000	0	0	0	0	0	.000	0	0	1	1000	0	0	0	0	0	0.0
Totals		3	20	11	85	.106	17	88	192	2	7	47	.851	62	5	925	30	2	10	1	0	29.0

Team Attack By Set

Set	K	E	TA	Pct
1	6	2	27	.148
2	10	4	31	.194
3	4	5	27	-.037

Site: Irvine, CA (Bren Events Center)
Date: Aug 31, 2012 Attend: 140 Time: 1:08
Referees: Burt Fuller, Mel Cayetano

Tie scores

1	2	3	Total
2	8	0	10
1	4	0	5

TOTAL TEAM BLOCKS: 4.0

TOTAL TEAM BLOCKS: 7.0

Match 6

Volleyball Box Score 2012 Arizona State Volleyball Arizona State vs LMU (Sep 01, 2012 at Los Angeles, Calif.)

#	Arizona State	ATTACK				SET			SERVE			RECEIVE			BLOCK			Points						
		S	K	E	TA	Pct	Asst	TA	Pct	SA	SE	TA	Pct	0	RE	Pct	Dig		BS	BA	BE	BHE		
1	Tuioti-Mariner, Nora	4	9	1	26	.308	0	0	0	0	0	.000	1	3	15	.800	4	0	1000	3	0	4	0	12.0
5	Pinson, Alexis	4	6	1	13	.385	0	1	0	0	0	.000	0	2	4	.500	0	0	0	0	0	0	11.0	
8	Follette, Whitney	1	1	1	5	.000	0	0	0	0	0	.000	0	0	4	1000	0	0	0	0	0	0	1.5	
12	Gardner, Macey	4	22	8	51	.275	0	1	0	0	0	.000	0	2	17	.882	36	1	.973	11	0	4	0	24.0
14	Francis, Caitlyn	4	0	0	0	.000	0	1	0	0	0	.000	11	2	846	3	0	0	0	0	0	0	0.0	
23	Palmer, Allison	4	1	0	4	.250	46	135	341	3	2	23	.913	0	0	0	0	0	0	0	0	9	0	4.5
4	Teslevich, Jenny	4	0	0	0	.000	1	3	333	0	0	0	.000	10	2	833	11	0	0	0	0	0	0.0	
6	Preach, Stephanie	4	0	0	0	.000	6	15	400	0	1	13	.923	15	1	938	27	0	0	0	0	0	0.0	
10	Wilson, Erica	4	17	10	56	.125	0	1	000	1	2	15	.867	0	0	0	0	0	0	0	0	3	1	19.5
17	Jorgensen, Bethany	3	0	0	0	.000	0	0	0	0	0	.000	1	1	8	.875	0	0	0	0	0	0	0	1.0
24	Binns, Mercedes	3	2	0	5	.400	0	0	0	0	0	.000	0	0	0	0	0	0	0	0	0	0	2.5	
Totals		4	58	21	160	.231	53	157	338	6	13	99	.869	76	6	927	65	0	24	3	0	76.0		

Team Attack By Set

Set	K	E	TA	Pct
1	15	7	43	.186
2	11	5	41	.146
3	15	7	41	.195
4	17	2	35	.429

SET SCORES

Team	1	2	3	4	Team Records:
Arizona State (3)	25	25	25	25	6-0
LMU (1)	27	23	21	18	4-2

TOTAL TEAM BLOCKS: 12.0

TOTAL TEAM BLOCKS: 9.0

#	LMU	ATTACK				SET			SERVE			RECEIVE			BLOCK			Points						
		S	K	E	TA	Pct	Asst	TA	Pct	SA	SE	TA	Pct	0	RE	Pct	Dig		BS	BA	BE	BHE		
3	CROUSE, Kenna	4	4	1	9	.333	0	1	000	0	0	0	.000	0	0	0	0	0	0	0	0	0	5.0	
5	KEIL, Litara	4	9	6	28	.107	1	2	500	0	1	12	.917	0	1	000	11	1	5	1	0	0	12.5	
11	DeWitt, Caitlin	3	2	6	16	-.250	0	0	0	0	0	.000	0	0	0	0	0	0	0	0	0	1	0	2.5
13	TEDROW, Hannah	4	2	0	3	.667	42	136	309	1	4	14	.714	0	0	0	0	0	0	0	0	8	0	5.5
21	LUFT, Kathleen	4	18	11	59	.119	0	2	000	1	2	12	.833	12	1	923	14	0	0	1	0	0	19.0	
67	ARRIOLA, Felicia	4	11	3	33	.242	2	3	667	0	0	17	1000	39	4	907	13	1	0	1	0	0	12.0	
12	MIRABELLO, Amber	1	2	0	2	1.000	1	1	000	0	0	0	.000	0	0	0	0	0	0	0	0	1	0	2.5
24	SCIOSCIA, Taylor	4	0	0	0	.000	0	3	000	2	1	17	.941	9	0	1000	6	0	0	0	0	0	2.0	
32	METTER, Betsi	4	0	0	0	.000	1	8	125	2	0	18	1000	20	0	1000	19	0	0	0	0	1	2.0	
Totals		4	48	27	150	.140	47	156	301	6	8	90	.911	80	6	930	73	2	14	4	1	63.0		

Team Attack By Set

Set	K	E	TA	Pct
1	16	7	38	.237
2	13	9	44	.091
3	7	6	31	.032
4	12	5	37	.189

Site: Los Angeles, Calif. (Gersten Pavilion

Match 9

Volleyball Box Score 2012 Arizona State Volleyball College of Charleston vs Arizona State (Sep 08, 2012 at Lawrence, Kan.)

##	College of Charleston	ATTACK			SET			SERVE			RECEIVE			BLOCK			Points					
		S	K	E TA	Pct	Asst	TA	Pct	SA	SE	TA	Pct	O	RE	Pct	Dig		BS	BA	BE	BHE	
1	Kallie McKown	3	0	1	4	-.250	15	64	.234	0	0	9	1000	0	0	.000	14	0	0	0	1	0.0
2	Lizzie Theesfeld	1	0	2	3	-.667	0	0	.000	0	0	0	.000	4	1	.800	0	0	0	0	0	0.0
4	Emily Neidfeffer	3	3	3	13	.000	0	1	.000	0	0	6	1000	0	0	.000	1	0	0	0	0	3.0
11	Darcy Dorton	3	4	7	26	-.115	0	4	.000	0	0	10	1000	2	1	.667	4	1	0	0	0	5.0
14	Kerstin Koehler	3	4	1	12	.250	0	2	.000	0	0	0	.000	0	0	.000	0	1	5	0	0	7.5
24	Andi Zbojniciewicz	3	0	0	0	.000	2	13	.154	1	0	7	1000	23	1	.958	7	0	0	0	0	1.0
5	Kari Fidelholtz	2	1	2	10	-.100	0	0	.000	0	0	0	.000	1	0	1000	1	0	0	0	0	1.0
6	Melissa Morello	1	0	0	1	.000	0	1	.000	0	0	1	1000	2	0	1000	0	0	0	0	0	0.0
9	Catey Warren	1	0	0	0	.000	1	1	1000	0	0	0	.000	0	0	.000	0	0	0	0	0	0.0
12	Emily Shelton	3	0	0	0	.000	2	6	.333	0	0	6	1000	6	0	1000	8	0	0	0	0	0.0
17	Sloane White	3	7	4	17	.176	0	3	.000	0	2	1	000	1	0	1000	0	5	0	0	0	9.5
18	Taeler Davis	1	0	0	0	.000	4	14	.286	0	0	4	1000	0	0	.000	2	0	0	0	0	0.0
19	Kelly Kolich	3	6	1	23	.217	0	7	.000	0	0	6	1000	27	0	1000	6	0	0	0	0	6.0
22	Grace Rebarchak	2	0	0	0	.000	0	0	.000	0	0	0	.000	0	0	.000	0	0	0	0	0	0.0
Totals		3	25	21	109	.037	24	116	.207	1	0	51	1000	66	3	.957	43	2	10	0	1	33.0

Team Attack By Set

Set	K	E	TA	Pct
1	10	5	31	.161
2	6	10	38	-.105
3	9	6	40	.075

SET SCORES

	1	2	3	Team Records:
College of Charleston (0)	17	12	21	4-4
Arizona State (3)	25	25	25	7-2

TOTAL TEAM BLOCKS: 7.0

##	Arizona State	ATTACK			SET			SERVE			RECEIVE			BLOCK			Points					
		S	K	E TA	Pct	Asst	TA	Pct	SA	SE	TA	Pct	O	RE	Pct	Dig		BS	BA	BE	BHE	
1	Tuotii-Mariner, Nora	3	5	1	14	.286	0	2	.000	0	0	15	1000	8	0	1000	5	0	3	0	0	6.5
5	Pinson, Alexis	3	4	1	12	.250	0	2	.000	1	1	8	.875	0	0	.000	1	0	7	0	0	8.5
10	Wilson, Erica	3	15	7	35	.229	1	3	.333	1	1	13	.923	0	0	.000	3	0	5	0	1	18.5
12	Gardner, Macey	3	19	9	48	.208	1	3	.333	1	2	10	.800	16	0	1000	7	2	0	0	0	21.0
23	Palmer, Allison	3	1	0	2	.500	46	100	.460	0	0	6	1000	0	0	.000	5	0	0	0	0	1.0
24	Binns, Mercedes	3	5	0	10	.500	0	1	.000	0	0	0	.000	0	0	.000	0	1	3	0	0	7.5
4	Teslevich, Jenny	3	0	0	0	.000	0	2	.000	0	0	0	.000	11	0	1000	5	0	0	0	0	0.0
6	Preach, Stephanie	3	0	0	0	.000	0	7	.000	0	1	10	.900	12	1	.923	24	0	0	0	0	0.0
14	Francis, Caitlyn	3	0	0	0	.000	3	3	.000	0	0	1	1000	3	0	.000	6	0	0	0	0	0.0
17	Jorgensen, Bethany	1	0	0	0	.000	0	0	.000	0	0	1	1000	0	0	.000	0	0	0	0	0	0.0
Totals		3	49	18	121	.256	48	123	.390	3	5	74	.932	50	1	.980	56	1	20	0	1	63.0

Team Attack By Set

Set	K	E	TA	Pct
1	18	5	36	.361
2	14	5	39	.231
3	17	8	46	.196

Site: Lawrence, Kan. (Horejsi Center)

Date: Sep 08, 2012 Attend: 61 Time: 1:14

Referees: Dave Spencer, Ross Erickson

	1	2	3	Total
Tie scores	0	2	6	8
Lead change	0	0	5	5

TOTAL TEAM BLOCKS: 11.0

Match 10

Volleyball Box Score 2012 Arizona State Volleyball Villanova vs Arizona State (Sep 14, 2012 at Tempe, Ariz.)

##	Villanova	ATTACK			SET			SERVE			RECEIVE			BLOCK			Points					
		S	K	E TA	Pct	Asst	TA	Pct	SA	SE	TA	Pct	O	RE	Pct	Dig		BS	BA	BE	BHE	
3	ANDERSEN, Krista	2	0	5	11	-.455	0	1	.000	0	1	3	.667	2	2	.500	1	0	1	0	0	0.5
4	PETTIT, Emma	3	0	1	4	-.250	13	80	.162	0	1	6	.833	0	0	.000	4	0	3	0	0	1.5
10	EDWARDS, Carly	3	7	0	20	.350	0	2	.000	0	0	0	.000	0	0	.000	1	0	4	0	0	9.0
13	JOYCE, Julie	2	0	0	0	.000	0	1	.000	0	0	2	1000	0	0	.000	0	0	0	0	0	1.0
15	PETHOKOUKIS, Gabby	3	2	1	12	.083	0	1	.000	0	0	0	.000	0	0	.000	0	0	7	2	0	5.5
18	CARPENTER, Lauren	3	4	7	32	-.094	1	2	.500	0	0	6	1000	25	2	.926	6	0	0	0	0	4.0
2	DWYER, Anna	1	0	0	0	.000	0	1	.000	0	0	0	.000	0	0	.000	3	0	0	0	0	0.0
5	REMBERT, Brittany	1	0	0	1	.000	0	0	.000	0	0	0	.000	0	0	.000	0	0	0	0	0	0.0
7	ADAMS, Michelle	3	0	1	1	-.100	0	0	.000	0	0	0	.000	13	1	.929	3	0	0	0	0	0.0
8	HENLEY, Mariah	3	0	0	1	.000	2	9	.222	0	1	10	.900	3	0	1000	16	0	0	0	1	0.0
11	DIBERNARDO, Allie	1	0	0	0	.000	1	3	.333	0	0	0	.000	0	0	.000	0	0	0	0	0	0.0
12	MOSKITIS, Ally	3	0	0	0	.000	0	6	.000	0	0	6	1000	19	1	.950	2	0	0	0	0	0.0
14	HICKEY, Colleen	2	3	2	6	.167	0	0	.000	1	1	6	1000	0	0	.000	3	0	0	0	0	4.0
19	TWITTY, CeCe	3	1	2	9	-.111	0	0	.000	0	1	3	.667	0	0	.000	0	0	1	1	0	1.5
Totals		3	17	19	97	-.021	17	106	.160	1	5	42	.881	62	6	.912	39	0	16	3	2	26.0

Team Attack By Set

Set	K	E	TA	Pct
1	3	10	35	-.200
2	3	5	26	-.077
3	11	4	36	.194

SET SCORES

	1	2	3	Team Records:
Villanova (0)	9	9	22	5-5
Arizona State (3)	25	25	25	8-2

TOTAL TEAM BLOCKS: 8.0

##	Arizona State	ATTACK			SET			SERVE			RECEIVE			BLOCK			Points					
		S	K	E TA	Pct	Asst	TA	Pct	SA	SE	TA	Pct	O	RE	Pct	Dig		BS	BA	BE	BHE	
1	Tuotii-Mariner, Nora	3	2	1	7	.143	0	1	.000	4	0	19	1000	3	0	1000	3	0	2	0	0	7.0
5	Pinson, Alexis	3	9	0	12	.750	1	1	1000	0	2	4	.500	0	0	.000	0	0	4	0	0	11.0
8	Follette, Whitney	3	5	2	16	.188	0	0	.000	0	0	0	.000	0	0	.000	1	1	2	0	0	7.0
12	Gardner, Macey	3	9	3	28	.214	0	2	.000	1	0	13	1000	13	0	1000	11	0	1	0	0	10.5
14	Francis, Caitlyn	3	0	0	0	.000	0	0	.000	0	0	0	.000	3	1	.750	3	0	0	0	0	0.0
23	Palmer, Allison	3	0	0	0	.000	33	80	.412	1	2	21	.905	0	0	.000	9	0	0	0	0	1.5
4	Teslevich, Jenny	3	0	0	0	.000	0	2	.000	0	0	0	.000	6	0	1000	7	0	0	0	0	0.0
6	Preach, Stephanie	3	1	0	3	.333	3	13	.231	0	0	11	1000	10	0	1000	19	0	0	0	0	1.0
10	Wilson, Erica	3	17	10	38	.184	0	1	.000	0	1	5	.800	0	0	.000	2	0	2	0	0	18.0

Match 13

Volleyball Box Score 2012 Arizona State Volleyball Gonzaga vs Arizona State (Sep 15, 2012 at Tempe, Ariz.)

#	Gonzaga	ATTACK			SET			SERVE			RECEIVE			BLOCK			Points					
		S	K	E	TA	Pct	Asst	TA	Pct	SA	SE	TA	Pct	O	RE	Pct		Dig	BS	BA	BE	BHE
1	WESLEY, Kennedy	4	0	0	1	.000	1	2	.500	1	1	10	.900	8	1	.889	6	0	0	0	0	1.0
5	CRENSHAW, Meredith	1	1	2	6	-.167	0	1	.000	0	0	3	1000	0	0	.000	0	0	0	0	0	1.0
7	BLINN, Savannah	4	14	9	40	.125	0	2	.000	1	0	11	1000	24	1	.960	7	2	1	0	0	17.5
13	RUTHERFORD, Katie	4	5	1	8	.500	32	101	.317	0	0	13	1000	2	0	.000	8	0	3	0	0	6.5
14	GASSER, Jordan	4	0	1	6	-.167	1	4	.250	0	1	9	.889	12	1	.923	6	0	0	0	0	0.0
16	EDINGER, Kylie	4	7	3	20	.200	0	1	.000	0	1	10	.900	0	0	.000	2	0	3	0	0	8.5
6	POINDEXTER, Terran	4	7	5	22	.091	0	2	.000	0	0	3	1000	7	1	.875	3	0	1	0	0	7.5
8	TAKAU, Kaistina	3	4	2	11	.182	0	1	.000	0	0	0	.000	1	2	5	0	0	0	0	0	8.5
11	NIELSON, Deanna	4	4	2	15	.133	0	2	.000	0	0	1	1000	1	0	.000	2	0	3	0	0	5.5
17	JOSEPH, Lauren	1	0	0	0	.000	1	5	.200	0	0	0	.000	0	0	.000	0	0	0	0	0	0.0
18	LAVRISHA, Kristina	4	0	0	1	.000	4	15	.267	0	1	10	.900	33	1	.971	11	0	0	0	0	0.0
	Team																					
	Totals	4	42	25	130	.131	39	136	.287	2	4	70	.943	87	7	.926	46	4	16	0	0	56.0

TOTAL TEAM BLOCKS: 12.0

Team Attack By Set

Set	K	E	TA	Pct
1	15	7	36	.222
2	15	6	36	.250
3	7	3	25	.160
4	5	9	33	-.121

SET SCORES

	1	2	3	4
Gonzaga (1)	20	25	11	13
Arizona State (3)	25	23	25	25

#	Arizona State	ATTACK			SET			SERVE			RECEIVE			BLOCK			Points					
		S	K	E	TA	Pct	Asst	TA	Pct	SA	SE	TA	Pct	O	RE	Pct		Dig	BS	BA	BE	BHE
1	Tuioti-Mariner, Nora	4	5	3	20	.100	0	1	.000	1	0	15	1000	5	0	.000	3	1	4	0	0	9.0
3	Pinson, Alexis	4	7	1	15	.400	0	1	.000	0	0	2	1000	0	0	.000	1	5	0	0	0	10.5
8	Follette, Whitney	2	3	1	8	.250	0	1	.000	0	1	6	.833	0	0	.000	0	0	1	0	0	3.5
12	Gardner, Macey	4	24	8	50	.320	1	7	.143	0	1	22	.955	18	10	.900	12	1	0	0	0	25.0
14	Francis, Caitlyn	4	0	0	0	.000	1	4	.250	0	0	0	.000	13	1	.929	5	0	0	0	0	0.0
23	Palmer, Allison	4	0	0	2	.000	50	108	.463	2	0	18	1000	0	0	.000	17	0	3	0	0	3.5
4	Teslevich, Jenny	2	0	0	0	.000	0	2	.000	0	0	0	.000	5	1	.833	2	0	0	0	0	0.0
6	Preach, Stephanie	4	0	0	0	.000	5	14	.357	0	0	10	1000	22	0	.000	16	0	0	0	0	0.0
10	Wilson, Erica	4	20	9	43	.256	0	1	.000	3	0	16	1000	0	0	.000	0	3	0	0	0	24.5
17	Jorgensen, Bethany	4	0	0	0	.000	0	0	.000	1	1	8	.875	0	0	.000	1	0	0	0	0	1.0
24	Binns, Mercedes	2	1	0	3	.333	0	1	.000	0	0	0	.000	0	0	.000	0	1	4	0	0	4.0
	Team																					
	Totals	4	60	22	141	.270	57	140	.407	7	3	97	.969	64	2	.970	56	4	20	0	0	81.0

TOTAL TEAM BLOCKS: 14.0

Team Attack By Set

Set	K	E	TA	Pct
1	17	4	38	.342
2	14	8	38	.158
3	15	4	26	.423
4	14	6	39	.205

Site: Tempe, Ariz. (Wells Fargo Arena)
Date: Sep 15, 2012 Attend: Time:
Referees: Syd Church, Peter Meyer

Tie scores

	1	2	3	4	Total
Tie scores	5	12	0	3	20
Lead change	2	2	0	1	5

Match 14

Volleyball Box Score 2012 Arizona State Volleyball Arizona State vs Arizona (Sep 18, 2012 at Tucson, Ariz.)

#	Arizona State	ATTACK			SET			SERVE			RECEIVE			BLOCK			Points					
		S	K	E	TA	Pct	Asst	TA	Pct	SA	SE	TA	Pct	O	RE	Pct		Dig	BS	BA	BE	BHE
1	Tuioti-Mariner, Nora	4	6	4	21	.095	1	5	.200	1	1	12	.917	1	0	.000	11	1	1	0	0	8.5
5	Pinson, Alexis	4	4	2	13	.154	0	0	.000	0	0	5	1000	0	0	.000	0	0	0	0	0	5.0
10	Wilson, Erica	4	18	10	48	.167	0	2	.000	0	0	9	1000	0	0	.000	2	0	3	0	0	19.5
12	Gardner, Macey	4	15	7	53	.151	1	4	.250	2	2	21	.905	1	4	.200	6	0	0	0	0	17.0
23	Palmer, Allison	4	0	0	0	.000	40	125	.320	1	2	12	.833	0	0	.000	9	0	1	0	0	1.5
24	Binns, Mercedes	2	0	4	4	-.100	0	1	.000	0	0	0	.000	0	0	.000	0	0	0	0	0	0.0
4	Teslevich, Jenny	3	0	0	0	.000	0	1	.000	0	0	0	.000	0	0	.000	3	0	0	0	0	0.0
6	Preach, Stephanie	4	0	0	0	.000	1	8	.125	0	0	19	1000	0	0	.000	13	0	0	0	0	0.0
7	McCready, Shannan	1	0	0	0	.000	0	1	.000	0	0	0	.000	0	0	.000	0	0	0	0	0	0.0
8	Follette, Whitney	3	3	3	10	.000	0	0	.000	0	1	1	.000	0	0	.000	0	0	0	0	0	5.5
14	Francis, Caitlyn	2	0	0	0	.000	0	2	.000	0	0	0	.000	0	0	.000	4	0	0	0	0	0.0
17	Jorgensen, Bethany	4	0	0	0	.000	0	1	.000	0	0	5	1000	0	0	.000	0	0	0	0	0	0.0
	Team																					
	Totals	4	46	30	149	.107	43	150	.287	4	6	84	.929	84	4	.955	49	2	10	2	0	57.0

TOTAL TEAM BLOCKS: 7.0

Team Attack By Set

Set	K	E	TA	Pct
1	12	10	31	.065
2	10	9	37	.027
3	13	5	38	.211
4	11	6	43	.116

SET SCORES

	1	2	3	4	Team Records:
Arizona State (1)	20	16	25	21	11-3, 0-1 Pac-12
Arizona (3)	25	25	20	25	9-3, 1-0 Pac-12

#	Arizona	ATTACK			SET			SERVE			RECEIVE			BLOCK			Points					
		S	K	E	TA	Pct	Asst	TA	Pct	SA	SE	TA	Pct	O	RE	Pct		Dig	BS	BA	BE	BHE
1	Lewis, Ronnie	4	0	0	0	.000	1	4	.250	1	2	21	.905	0	1	.000	11	0	0	0	0	1.0
3	Amaro, Halli	4	11	8	24	.125	0	1	.000	0	0	0	.000	1	0	.000	2	0	4	2	0	13.0
7	Rhoads, Rachel	4	4	14	1000	.000	0	0	.000	0	0	0	.000	0	0	.000	0	1	6	0	0	8.0
8	Magill, Olivia	4	9	1	17	.471	0	0	.000	0	1	7	.857	0	0	.000	2	0	6	0	0	12.0
9	Kuller, Madi	4	20	4	44	.364	0	4	.000	0	0	13	1000	1	1	.500	11	0	4	0	0	22.0
21	Fuller, Lauren	4	0	0	0	.000	22	56	.393	0	0	10	1000	0	0	.000	7	0	0	0	0	0.0
5	Brown, Chanel	4	0	0	0	.000	28	69	.406	1	0	25	1000	0	0	.000	3	0	0	0	0	1.0
14	Aribonal, Taylor	4	7	5	27	.074	0	1	.000	0	0	0	.000	0	1	.000	2	1	0	0	0	8.0
15	McKinney, Aubrey	2	0	0	0	.000	0	0	.000	0	0	2	1000	0	0	.000	0	0	0	0	0	0.0
22	Torres, Shaquillah	4	4	4	15	.000	0	2	.000	0	0	0	.000	0	0	.000	3	0	4	0	0	6.0
33	Nicholson, Candace	4	0	0	0	.000	1	12	.083	2	0	15	1000	0	0	.000	21	0	0			

Match 17

Volleyball Box Score 2012 Arizona State Volleyball #7 Stanford vs Arizona State (Sep 30, 2012 at Tempe, Ariz.)

#	Stanford	ATTACK				SET			SERVE			RECEIVE			BLOCK			Points				
		S	K	E	TA	Pct	Asst	TA	Pct	SA	SE	TA	Pct	O	RE	Pct	Dig		BS	BA	BE	BHE
2	Wopat, Carly	4	8	3	19	.263	1	3	.333	0	2	21	.905	0	0	.000	7	1	11	2	0	14.5
6	Williams, Rachel	4	5	2	18	.167	0	1	.000	0	0	3	1000	0	0	.000	2	0	7	1	0	8.5
12	Ajanaku, Inky	4	11	3	20	.400	0	0	.000	0	0	0	.000	1	0	0	3	0	0	0	0	12.5
16	Howard, Brittany	4	13	2	40	.275	0	2	.000	0	3	13	.769	26	2	.929	5	0	1	0	0	13.5
22	Bugg, Madi	4	0	1	2	-.500	26	65	.400	0	3	15	.800	0	0	.000	2	0	0	0	0	0.0
23	Burgess, Jordan	4	10	3	30	.233	1	2	.500	0	3	22	.864	35	1	.972	15	0	3	0	0	11.5
3	Boukather, Morgan	4	8	2	20	.300	0	0	.000	0	0	0	.000	0	0	.000	2	0	4	1	0	10.0
10	Gilbert, Kyle	4	0	0	0	.000	3	20	.150	0	1	19	.947	22	0	1000	14	0	0	0	0	0.0
15	Cook, Karissa	4	0	0	0	.000	23	57	.404	0	2	11	.818	0	0	.000	14	0	0	0	0	0.0
20	Luck, Mary Ellen	2	0	0	0	.000	0	0	.000	0	0	0	.000	0	0	.000	0	0	0	0	0	0.0
Totals		4	55	16	149	.262	54	150	.360	0	14	104	.865	83	3	.965	62	1	29	4	0	70.5

Team Attack By Set

Set	K	E	TA	Pct
1	18	5	42	.310
2	14	2	32	.375
3	12	5	42	.167
4	11	4	33	.212

SET SCORES

	1	2	3	4	Team Records:
Stanford (3)	29	25	26	25	12-2, 4-0 Pac-12
Arizona State (1)	27	17	28	23	13-4, 2-2 Pac-12

TOTAL TEAM BLOCKS: 15.5

#	Arizona State	ATTACK				SET			SERVE			RECEIVE			BLOCK			Points				
		S	K	E	TA	Pct	Asst	TA	Pct	SA	SE	TA	Pct	O	RE	Pct	Dig		BS	BA	BE	BHE
1	Tuioti-Mariner, Nora	2	3	1	9	.222	1	4	.250	0	1	10	.900	7	0	1000	3	0	0	0	1	3.0
5	Pinson, Alexis	4	6	1	13	.385	0	2	.000	0	2	6	.667	0	0	.000	2	1	2	0	0	8.0
8	Follette, Whitney	4	8	5	20	.150	0	1	.000	0	1	13	.923	0	0	.000	4	0	5	0	0	10.5
12	Gardner, Macey	4	27	16	74	.149	0	6	.000	0	1	18	.944	32	0	1000	13	0	2	1	0	28.0
14	Francis, Caitlyn	4	0	0	1	.000	0	4	.000	0	1	10	1000	11	0	1000	7	0	0	0	0	0.0
23	Palmer, Allison	2	0	0	0	.000	25	64	.391	1	0	6	1000	0	0	.000	5	0	0	0	0	1.0
4	Teslevich, Jenny	4	0	0	0	.000	0	3	.000	0	0	0	.000	22	0	1000	9	0	0	0	0	0.0
6	Preach, Stephanie	4	0	0	0	.000	4	13	.308	0	0	14	1000	17	0	1000	21	0	0	0	0	0.0
7	McCready, Shannan	3	0	0	1	.000	29	77	.377	2	0	11	1000	0	0	.000	4	0	1	0	0	2.5
10	Wilson, Erica	4	15	4	48	.021	0	0	.000	0	3	13	.769	1	0	1000	2	0	1	1	0	15.5
17	Jorgensen, Bethany	3	0	0	0	.000	2	2	.500	0	1	4	.750	0	0	.000	0	0	0	0	0	0.0
24	Binns, Mercedes	2	2	1	8	.125	0	2	.000	0	0	0	.000	0	0	.000	1	0	0	0	0	2.5
Totals		4	61	38	174	.132	60	178	.337	3	9	96	.906	90	0	1000	71	1	12	2	1	71.0

Team Attack By Set

Set	K	E	TA	Pct
1	17	10	42	.167
2	13	9	43	.093
3	16	10	48	.125
4	15	9	41	.146

Site: Tempe, Ariz. (Wells Fargo Arena)
Date: Sep 30, 2012 Attend: 1583 Time: 2:15
Referees: Ray Mink, Alan Hirayama

Tie scores

	1	2	3	4	Total
Tie scores	12	4	11	10	37
Lead change	3	2	4	1	10

TOTAL TEAM BLOCKS: 7.0

Match 18

Volleyball Box Score 2012 Arizona State Volleyball Arizona State vs #6 UCLA (Oct 05, 2012 at Los Angeles, Calif.)

#	Arizona State	ATTACK				SET			SERVE			RECEIVE			BLOCK			Points				
		S	K	E	TA	Pct	Asst	TA	Pct	SA	SE	TA	Pct	O	RE	Pct	Dig		BS	BA	BE	BHE
5	Pinson, Alexis	3	6	3	15	.200	0	0	.000	2	3	11	.727	0	0	.000	2	0	1	0	0	8.5
8	Follette, Whitney	3	3	2	6	.167	1	1	1000	0	0	5	1000	0	0	.000	0	0	1	0	0	3.5
12	Gardner, Macey	3	8	2	27	.222	2	7	.286	0	1	9	.889	39	1	.975	4	0	1	0	0	8.5
14	Francis, Caitlyn	3	0	0	0	.000	0	1	.000	0	0	0	.000	4	0	1000	6	0	0	0	0	0.0
23	Palmer, Allison	3	0	0	1	.000	22	61	.361	0	2	7	.714	0	0	.000	1	0	0	0	0	0.0
24	Binns, Mercedes	3	1	2	4	-.250	0	0	.000	0	0	0	.000	2	1	.667	0	0	2	1	0	2.0
1	Tuioti-Mariner, Nora	3	2	3	8	-.125	0	1	.000	0	0	2	1000	9	0	1000	3	0	0	0	0	2.0
4	Teslevich, Jenny	2	0	0	0	.000	0	0	.000	0	0	0	.000	6	0	1000	0	0	0	0	0	0.0
6	Preach, Stephanie	3	0	0	0	.000	0	2	.000	0	0	8	1000	6	0	1000	5	0	0	0	0	0.0
7	McCready, Shannan	1	1	0	1	1.000	5	15	.333	0	1	1	.000	0	0	.000	0	0	0	0	0	1.0
10	Wilson, Erica	3	12	10	29	.069	0	1	.000	0	1	7	.857	2	0	1000	1	1	1	1	0	13.5
17	Jorgensen, Bethany	1	0	0	0	.000	0	0	.000	0	0	0	.000	0	0	.000	0	0	0	0	0	0.0
Totals		3	33	22	91	.121	30	89	.337	2	8	51	.843	68	2	.971	22	1	6	2	0	39.0

Team Attack By Set

Set	K	E	TA	Pct
1	14	3	35	.314
2	11	8	29	.103
3	8	11	27	-.111

SET SCORES

	1	2	3	4	Team Records:
Arizona State (0)	22	13	15	13-5	2-3 Pac-12
UCLA (3)	25	25	25	11-3	3-2 Pac-12

TOTAL TEAM BLOCKS: 4.0

#	UCLA	ATTACK				SET			SERVE			RECEIVE			BLOCK			Points				
		S	K	E	TA	Pct	Asst	TA	Pct	SA	SE	TA	Pct	O	RE	Pct	Dig		BS	BA	BE	BHE
2	Reeves, Kelly	3	2	2	5	.000	0	0	.000	0	0	11	1000	18	0	1000	6	0	1	0	0	2.5
3	Love, Tabi	3	15	4	28	.393	0	1	.000	0	0	0	.000	2	0	.000	2	1	3	0	0	17.5
9	Moenoa, Megan	3	3	0	3	1.000	33	62	.532	0	1	11	.909	0	0	.000	5	0	2	0	0	4.0
11	Kidder, Rachael	3	7	3	23	.174	0	0	.000	1	0	18	1000	2	0	1000	4	1	1	0	0	9.5
12	Aquino, Mariana	3	5	0	7	.714	0	2	.000	0	0	10	1000	1	0	1000	1	1	5	0	0	8.5
13	Nightingale, Zoe	3	4	1	7	.429	0	0	.000	0	0	0	.000	0	0	.000	0	1	5	0	1	6.5
5	Strehlow, Becca	1	0	0	0	.000	2	5	.400	0	0	0	.000	0	0	.000	0	0	0	0	0	0.5
10	Todorovic, Bojana	3	1	0	1	.000	2	2	1000	1	3	18	.833	14	0	1000	6	0	0	0	0	2.0
14	Norton, Meg	3	0	0	0	.000	0	0	.000	0	0	6	1000	6	1	.857	1	0	0	0	0	0.0
17	Lowe, Karsta	3	5	0	6	.833	0	2	.000	0	0	0	.000	0	0	.000	1	0	2	0	0	6.0
Totals		3	42	10	80	.400	37	74	.500	2	4	74	.946	41	2	.953	26	3	20	1	0	57.0

Team Attack By Set

Set	K	E	TA	Pct
1	22	7	41	.366
2	12	0	21	.571
3	8	3	18	.278

Site: Los Angeles, Calif. (John Wooden Center)
Date: Oct 05, 2012 Attend: 903 Time: 1:22
Refere

Match 21

Volleyball Box Score 2012 Arizona State Volleyball Arizona State vs Utah (Oct 14, 2012 at Salt Lake City, Utah)

##	Arizona State	ATTACK				SET			SERVE			RECEIVE			BLOCK			Points			
		S	K	E	TA	Pct	Asst	TA	Pct	SA	SE	TA	Pct	O	RE	Pct	Dig		BS	BA	BE
1	Tuioti-Mariner, Nora	2	4	2	16	.125	0	0	.000	0	0	5	1000	15	1	.938	0	0	0	0	4.0
5	Pinson, Alexis	3	5	1	15	.267	0	1	.000	0	1	2	.500	0	0	.000	0	0	1	0	5.5
8	Follette, Whitney	3	4	2	11	.182	0	2	.000	0	2	4	.500	0	0	.000	3	1	1	0	5.5
10	Wilson, Erica	3	14	8	27	.222	0	0	.000	1	2	12	.833	0	0	.000	1	0	0	0	15.0
12	Gardner, Macey	3	12	8	37	.108	0	3	.000	1	0	7	1000	31	2	.939	8	0	0	0	13.0
23	Palmer, Allison	2	0	0	0	.000	19	51	.373	0	0	4	1000	0	0	.000	3	0	0	0	1.0
4	Teslevich, Jenny	2	0	0	0	.000	0	0	.000	0	0	2	1000	8	1	.889	3	0	0	0	0.0
6	Preach, Stephanie	3	0	0	0	.000	1	6	.167	1	0	12	1000	8	1	.889	6	0	0	0	1.0
7	McCready, Shannan	2	0	0	2	.000	21	43	.488	0	0	4	1000	0	0	.000	2	0	0	0	0.0
14	Francis, Caitlyn	3	0	0	0	.000	0	1	.000	0	0	0	.000	5	0	1000	5	0	0	0	0.0
17	Jorgensen, Bethany	2	0	0	0	.000	0	0	.000	0	0	2	1000	0	0	.000	0	0	0	0	0.0
24	Bimms, Mercedes	1	2	0	2	1.000	0	0	.000	0	0	0	.000	0	0	.000	0	0	0	0	2.0
Totals		3	41	21	110	.182	41	107	.383	3	5	54	.907	67	5	.931	31	1	2	0	46.0

Team Attack By Set

Set	K	E	TA	Pct
1	13	7	32	.188
2	10	6	32	.125
3	18	8	46	.217

SET SCORES

	1	2	3	Team Records:
Arizona State (0)	15	16	22	13-8, 2-6 Pac-12
Utah (3)	25	25	25	11-10, 2-6 Pac-12

TOTAL TEAM BLOCKS: 2.0

##	Utah	ATTACK				SET			SERVE			RECEIVE			BLOCK			Points				
		S	K	E	TA	Pct	Asst	TA	Pct	SA	SE	TA	Pct	O	RE	Pct	Dig		BS	BA	BE	BHE
3	Bateman, Bailey	3	3	1	10	.200	0	0	.000	0	0	0	.000	1	0	1000	3	0	10	1	0	8.0
6	Odale, Morgan	3	9	0	19	.474	0	0	.000	2	0	11	1000	29	2	.935	7	0	1	0	0	11.5
10	Dalton, Shelby	3	8	0	11	.727	0	1	.000	0	0	0	.000	0	0	.000	0	0	5	0	0	10.5
11	Schofield, Chelsey	3	15	4	28	.393	0	0	.000	0	1	8	.875	9	0	1000	6	0	1	1	0	15.5
17	Redd, Erin	3	7	1	11	.545	0	0	.000	0	1	8	.875	0	0	.000	3	0	2	0	0	8.0
19	Cygan, Kendall	3	0	0	0	.000	20	40	.500	1	0	16	1000	0	0	.000	3	0	0	0	0	1.0
1	Odale, McKenzie	3	0	0	1	.000	18	35	.514	1	0	16	1000	0	0	.000	6	0	0	0	1.0	
4	Sim, Nikki	3	0	0	0	.000	4	6	.667	1	0	15	1000	7	1	.875	9	0	0	0	1.0	
8	Spurrer, Alli	3	1	0	5	.200	0	1	.000	0	0	0	.000	0	0	.000	2	0	5	0	3.5	
Totals		3	43	6	85	.435	42	83	.506	5	2	74	.973	46	3	.939	39	0	24	2	1	60.0

Team Attack By Set

Set	K	E	TA	Pct
1	15	3	29	.414
2	15	3	29	.414
3	13	2	31	.355

Site: Salt Lake City, Utah (Crimson Court)

Date: Oct 14, 2012 Attend: 608 Time: 1:22

Referees: Virginia Hays, Daphne Nelson

	1	2	3	Total
Tie scores	7	3	8	18
Lead change	3	1	3	7

TOTAL TEAM BLOCKS: 12.0

Match 22

Volleyball Box Score 2012 Arizona State Volleyball Oregon State vs Arizona State (Oct 19, 2012 at Tempe, Ariz.)

##	Oregon State	ATTACK				SET			SERVE			RECEIVE			BLOCK			Points				
		S	K	E	TA	Pct	Asst	TA	Pct	SA	SE	TA	Pct	O	RE	Pct	Dig		BS	BA	BE	BHE
1	O'Neil, Alyssa	3	0	0	0	.000	4	10	.400	0	0	6	1000	15	0	1000	5	0	0	0	0	0.0
3	Saxton, Camille	3	8	3	29	.172	0	4	.000	0	1	5	.800	4	0	.000	4	0	3	0	0	9.5
4	Clarke, Haley	2	0	1	6	.167	0	1	.000	0	0	0	.000	0	0	.000	2	1	3	0	0	2.5
10	McBride, Megan	3	3	0	8	.375	16	71	.225	1	1	9	.889	0	0	.000	3	1	2	0	1	6.0
19	Massey, Martie	1	0	0	0	.000	0	0	.000	0	0	1	.000	7	0	1000	0	0	0	0	0.0	
40	Nassar, Arica	3	3	4	12	.083	0	1	.000	1	0	4	1000	0	0	.000	0	0	4	0	0	6.0
5	Almen, Sara	3	2	5	12	.250	0	2	.000	0	0	0	.000	0	0	.000	1	0	0	0	0	2.0
6	Defoe, Becky	3	0	0	0	.000	0	5	.000	0	4	750	12	1	.923	13	0	0	0	0	0.0	
9	Reeder, Darby	3	0	0	1	.000	0	1	.000	0	0	4	1000	12	0	1000	0	0	0	0	0.0	
11	Sopizhuk, Alina	1	0	2	5	.400	0	0	.000	0	0	4	1000	1	0	1000	2	0	0	0	0	0.0
13	Brown, Amanda	2	1	1	4	.250	0	0	.000	0	1	7	.857	0	0	.000	1	1	1	0	0	2.5
21	Woods, Tayla	1	1	0	1	1.000	2	7	.286	1	0	6	1000	0	0	.000	1	0	0	0	0	2.0
27	Schmidt, Laura	1	0	0	1	.000	0	0	.000	0	0	0	.000	0	0	.000	0	0	1	0	0	0.5
32	Enelkow, Ashley	3	4	5	18	.056	0	1	.000	0	0	0	.000	17	0	1000	2	0	3	0	0	5.5
Totals		3	22	21	97	.010	22	103	.214	3	5	50	.900	68	1	.986	35	3	17	0	1	36.5

Team Attack By Set

Set	K	E	TA	Pct
1	6	6	31	.000
2	10	8	36	.056
3	6	7	30	-.033

SET SCORES

	1	2	3	Team Records:
Oregon State (0)	12	20	16	13-8, 3-6 Pac-12
Arizona State (3)	25	25	25	14-8, 3-6 Pac-12

TOTAL TEAM BLOCKS: 11.5

##	Arizona State	ATTACK				SET			SERVE			RECEIVE			BLOCK			Points				
		S	K	E	TA	Pct	Asst	TA	Pct	SA	SE	TA	Pct	O	RE	Pct	Dig		BS	BA	BE	BHE
1	Tuioti-Mariner, Nora	3	6	3	13	.231	1	2	.500	0	1	4	.750	12	1	.923	6	0	2	0	0	7.0
5	Pinson, Alexis	3	5	4	11	.091	1	3	.333	0	0	0	.000	0	0	.000	0	0	0	0	0	5.0
8	Follette, Whitney	3	6	1	13	.385	0	2	.000	0	2	7	.714	0	0	.000	3	0	4	1	0	8.0
10	Wilson, Erica	3	16	7	37	.243	0	3	.000	0	1	13	.923	0	0	.000	1	0	1	0	0	16.5
12	Gardner, Macey	3	13	4	30	.300	0	4	.000	0	0	12	1000	18	2	.900	9	0	0	0	0	13.0
23	Palmer, Allison	3	0	0	1	.000	37	80	.463	0	0	12	1000	0	0	.000	6	0	1	0	0	0.5
4	Teslevich, Jenny	1	0	0	0	.000	0	0	.000	0	0	2	1000	1	0	1000	1	0	0	0	0	0.0
6	Preach, Stephanie	3	0	0	0	.000	2	7	.286	1	0	22	1000	8	0	1000	16	0	0	0	0	1.0
14	Francis, Caitlyn	3	0	0	0	.000	0	0	.000	0	0	0	.000	3	0	1000	2	0	0	0	0	0.0
17	Jorgensen, Bethany	1	0	0	0	.000	0	0	.000	0	0	1	1000	0	0	.000	0	0	0	0	0	0.0
Totals		3	46	19	105	.257	41	101	.406	1	4	73	.945	42	3	.933	44	0	8	1	0	51.0

Team Attack By Set

Set	K	E	TA	Pct
1	15	4	33	.333
2	15	7	35	

Match 25

Volleyball Box Score 2012 Arizona State Volleyball Arizona State vs California (Oct 28, 2012 at Berkeley, Calif.)

##	Arizona State	ATTACK				SET			SERVE			RECEIVE			BLOCK			Points				
		S	K	E	TA	Pct	Ass	TA	Pct	SA	SE	TA	Pct	O	RE	Pct	Digs		BS	BA	BE	BHE
1	Tuioti-Mariner, Nora	5	7	5	22	.091	0	24	.000	1	2	18	.889	27	1	.964	18	1	4	0	0	11.0
5	Pinson, Alexis	5	5	0	11	.455	0	0	.000	0	0	0	.000	0	0	.000	2	1	6	0	0	9.0
8	Follette, Whitney	5	8	5	26	.115	0	3	.000	1	3	13	.769	0	0	.000	3	0	6	0	0	12.0
12	Gardner, Macey	5	23	12	65	.169	0	19	.000	1	1	16	.938	28	1	.966	9	0	1	0	0	24.5
14	Francis, Caitlyn	2	0	0	0	.000	0	4	.000	0	0	0	.000	6	0	1000	1	0	0	0	0.0	
23	Palmer, Allison	5	2	0	3	.667	55	62	.887	0	0	15	1000	0	0	.000	14	0	6	0	0	5.0
4	Teslevich, Jenny	5	0	0	0	.000	0	11	.000	0	0	7	1000	8	0	1000	8	0	0	0	0	0.0
6	Preach, Stephanie	5	0	0	0	.000	8	34	.235	1	0	16	1000	24	0	1000	14	0	0	0	0	1.0
10	Wilson, Erica	5	23	8	54	.278	2	5	.400	2	0	11	1000	1	0	1000	5	0	1	1	0	25.5
17	Jorgensen, Bethany	2	0	0	2	.000	0	1	.000	0	0	5	1000	3	1	.750	0	0	0	0	0	0.0
Team		1																				
Totals		5	68	30	183	.208	65	163	.399	6	6	101	.941	97	4	.960	74	2	24	1	0	88.0

Team Attack By Set

Set	K	E	TA	Pct
1	19	10	47	.191
2	12	8	34	.118
3	18	2	32	.500
4	10	6	35	.114
5	9	4	35	.143

TOTAL TEAM BLOCKS: 14.0

SET SCORES		1	2	3	4	5	Team Records:
Arizona State (3)		25	23	25	13	16	15-10, 4-8
California (2)		23	25	18	25	14	11-11, 5-7

##	California	ATTACK				SET			SERVE			RECEIVE			BLOCK			Points				
		S	K	E	TA	Pct	Ass	TA	Pct	SA	SE	TA	Pct	O	RE	Pct	Digs		BS	BA	BE	BHE
4	Vukasovic, Lara	3	3	4	20	-.050	0	10	.000	0	0	4	1000	10	0	1000	4	0	3	0	0	4.5
7	Hawari, Shannon	5	18	2	32	.500	0	2	.000	1	0	11	1000	1	0	1000	2	1	11	0	0	25.5
8	Johnson, Correy	5	14	4	40	.250	1	2	.500	0	0	0	.000	0	0	.000	4	0	9	1	0	18.5
11	Brown, Kat	5	1	0	3	.333	1	4	.250	2	1	29	.966	2	0	1000	4	0	6	0	0	6.0
12	Caloio, Joan	5	1	0	5	.200	53	65	.815	0	1	18	.944	0	0	.000	12	0	3	0	0	2.5
23	Higgins, Christina	3	12	5	32	.219	0	0	.000	0	0	0	.000	0	0	.000	0	0	4	2	0	14.0
3	Gombar, Nikki	5	7	2	19	.263	1	18	.056	0	2	17	.882	13	0	1000	12	0	0	0	0	7.0
5	Gehan, Adrienne	4	8	4	25	.160	1	21	.048	0	1	12	.917	34	4	.895	6	0	1	0	0	8.5
13	McKennon, Mary	5	0	0	0	.000	3	21	.143	0	0	1	1000	9	1	.900	19	0	0	0	0	0.0
22	Davis, Marlee	5	0	0	0	.000	1	11	.091	1	0	14	1000	20	1	.952	3	0	0	0	0	1.0
Totals		5	64	21	176	.244	61	154	.396	4	5	106	.953	89	6	.937	66	1	37	3	0	87.5

Team Attack By Set

Set	K	E	TA	Pct
1	11	3	42	.190
2	17	5	38	.316
3	14	4	35	.286
4	13	3	27	.370
5	9	6	34	.088

TOTAL TEAM BLOCKS: 19.5

Site: Berkeley, Calif. (Haas Pavilion)
Date: Oct 28, 2012 Attend: 476 Time: 2:28
Referees:

	1	2	3	4	5	Total
Tie scores	6	11	5	0	6	28
Lead change	1	4	2	0	1	8

Match 26

Match 27

Match 28